



Parks and Open Spaces Strategy Evidence base Appendix A

Section 1: National Context

At a national level the key policy and guidance documents that underpin this strategy and set out clear expectations for local authorities to take a strategic approach to green space are:

- The Natural Environment White Paper (NEWP)
- The Biodiversity Strategy for England (BSE)
- The Localism Act, 2011
- The National Planning Policy Framework (NPPF)
- Making Space for Nature (MSN)
- Natural England's Green Infrastructure Guidance (GIG)
- DEFRA's Green Infrastructure Partnership (GIP)
- Communities and Local Government Committee: Public Park – Seventh Report Session (2016 – 2017)
- Government Response to the Communities and Local Government Select Committee Report: The Future of Public Parks (2017)

The Natural Environment White Paper (NEWP)

The NEWP (2011) states the government's view that the quality of the natural environment is in decline, highly fragmented and unable to respond to the pressures that will follow from climate change. The NEWP is based largely on the concept of "ecosystem services" and the benefits that society gains from natural resources and functional natural systems – benefits such as food and water, fertile soils and clean air. It concludes that many ecosystems are in decline and therefore the benefits society derives from them are also in decline. As a result, it argues for the creation and maintenance of a "resilient ecological network across England". It also refers to urban green infrastructure as completing "the links in our national ecological network" and "one of the most effective tools available to us in managing environmental risks such as flooding and heat waves".

The White Paper introduced several new policy initiatives, including:

- Local Nature Partnerships, intended to work at a strategic scale for a better natural environment
- Nature Improvement Areas intended to enhance and reconnect nature on a significant scale
- Biodiversity offsets, designed to deliver biodiversity benefits for losses through compensatory habitat expansion or restoration elsewhere
- A Green Infrastructure (GI) Partnership designed to support the development of GI in England

The Biodiversity Strategy for England (BSE)

The BSE, Biodiversity 2020: A Strategy for England's Wildlife and Ecosystem Services, sets out how the Government intends to implement international and EU commitments. It aims to reduce the environmental pressures created by development by "taking a strategic approach to planning for nature" and by retaining "the protection and improvement of the natural environment as core objectives of the planning system".

National Planning Policy Framework (2018)

The NPPF sets out the planning policies for England. It details how these are expected to be applied to the planning system and provides a framework to produce distinct local and neighbourhood plans, reflecting the needs and priorities of local communities.

It states that the purpose of the planning system is to contribute to the achievement of sustainable development. It establishes that the planning system needs to focus on three themes of sustainable development: economic, social, and environmental. A presumption in favour of sustainable development is a key aspect for any plan-making and decision-taking processes. In relation to plan-making the NPPF sets out that Local Plans should meet objectively assessed needs.

Under paragraph 96 of the NPPF, it is set out that planning policies should be based on robust and up-to-date assessments of the needs for open space, sports and recreation facilities and opportunities for new provision. Specific needs and quantitative and qualitative deficiencies and surpluses in local areas should also be identified. This information should be used to inform what provision is required in an area.

As a prerequisite paragraph 97 of the NPPF states that existing open space, sports, and recreation sites, including playing fields, should not be built on unless:

- An assessment has been undertaken, which has clearly shown the site to be surplus to requirements; or
- The loss resulting from the proposed development would be replaced by equivalent or better provision in terms of quantity and quality in a suitable location; or
- The development is for alternative sports and recreational provision, the needs for which clearly outweigh the loss

Communities and Local Government Committee: Public parks - Seventh Report of Session (2016–17)

Discusses in detail the three key questions on the inquiry into public parks: why parks matter, what challenges are facing the parks sector, and how we can secure a sustainable future for parks. A summary of the three themes is set out below:

Why do parks matter?

Clear evidence of the high usage and role of parks in serving a wide range of users including children and young people is strongly discussed. Furthermore, the many benefits of parks are recognised including:

- Physical and mental health and wellbeing
- Active travel
- Community cohesion and identity
- Biodiversity and access to nature
- Local economy and growth
- Climate change and the environment

Whilst the diverse role of parks is widely acknowledged as indisputable, the focus on parks as physical assets and operational costs can overlook the benefits provided. There is a need for assessment of parks to be more nuanced in a way which values it in terms of health and wellbeing, amenity, and leisure.

What challenges are facing the parks sector?

A number of demands and trends are impacting on the management, maintenance and use of parks across the country. These include:

- Competing demands and tensions between parks users
- Funding reductions
- Health and safety
- Access to revenue and capital funding
- Unequal distribution of parks and green spaces
- Planning policy
- Green infrastructure

How can we secure a sustainable future for parks?

No one size fits all solution is recognised. However, it is highlighted that local authorities are best placed to make decisions appropriate to their local circumstances. Other key considerations include:

- The role of the community
- Innovation and alternative approaches
- A statutory duty to provide and maintain parks
- Coordination and leadership

Government Response to the Communities and Local Government Select Committee Report: The Future of Public Parks (2017)

The document examines the inquiry conducted by Communities and Local Government Select Committee (in July 2016) on the future of public parks. It builds upon the previous themes of why do parks matter, what challenges is the sector facing and can a sustainable future be secured.

In total 17 recommendations were made with each being considered by the Parks Minister as part of the formal Government response. A summary of some of the more relevant recommendations to local authorities are provided below:

- Recommendation Three: As part of developing their exclusive use and charging policies for parks and open spaces, local authorities should work collaboratively with relevant groups of park users to identify the range of ways in which they can contribute to their parks.
- Recommendation Four: Local authorities should encourage and support the development of friends' group forums, and work with them in a coordinated way to ensure that needs are properly assessed, and resources are prioritised and targeted appropriately.
- Recommendation Seven: Local Plans should take a whole-place approach recognising the importance of parks and green spaces to existing and new communities.
- Recommendation Thirteen: Cross-departmental group should encourage and facilitate the evaluation and benchmarking of emerging models for parks management, and the sharing of best practice.
- Recommendation Fourteen: guidance for local authorities that they should work collaboratively with Health and Wellbeing Boards (and others) to prepare joint strategies.

Promoting Healthy Communities

Open space is a vitally important component of sustainable development and is covered in the NPPF objective of Promoting Health Communities. It requires planning authorities:

- To create a shared vision with communities of the residential environment and facilities they wish to see.
- To deliver the social, recreational, and cultural facilities and services the community needs.

- To base their planning policies on “robust and up to date assessments of the needs for parks and open space, sports and recreation facilities and opportunities for new provision, “in effect, what was known until recently as a “PPG17 assessment” or “green space strategy;”
- To protect and enhance public rights of way and access.

It provides highly specific guidance:

- Existing park and open space, sports and recreational buildings and land, including playing fields, should not be built on unless:
- An assessment has been undertaken which has clearly shown the open space, buildings, or land to be surplus to requirements; or
- The loss resulting from the proposed development would be replaced by equivalent or better provision in terms of quantity and quality in a suitable location; or
- The development is for alternative sports and recreational provision, the needs for which clearly outweigh the loss.

Protecting Green Belt Land

The NPPF states unequivocally that “the fundamental aim of Green Belt policy is to prevent urban sprawl by keeping land permanently open” and requires planning authorities to:

“... plan positively to enhance the beneficial use of the Green Belt, such as looking for opportunities to provide access; to provide opportunities for outdoor sport and recreation; to retain and enhance landscapes, visual amenity and biodiversity; or to improve damaged and derelict land”.

It also states that the construction of buildings in the Green Belt is inappropriate, although it also highlights a number of exceptions to this general rule. They include the

“... provision of appropriate facilities for outdoor sports, outdoor recreation and for cemeteries, as long as it preserves the openness of the Green Belt and does not conflict with the purposes of providing land within it”.

Conserving and Enhancing the Natural Environment

The NPPF suggests that the planning system should help conserve and enhance the natural environment by:

- Protecting and enhancing valued landscapes, geological conservation interests and soils.
- Recognising the wider benefits of ecosystem services.

- Minimising impacts on biodiversity and providing net gains in biodiversity where possible, contributing to the Government's commitment to halt the overall decline in biodiversity, including by establishing coherent ecological networks that are more resilient to current and future pressures.
- Preventing both new and existing development from contributing to or being put at unacceptable risk from, or being adversely affected by unacceptable levels of soil, air, water or noise pollution or land instability; and
- Remediating and mitigating despoiled, degraded, derelict, contaminated and unstable land, where appropriate.

Provision Standards

The Framework entitled "Using a proportionate evidence base", requires that planning authorities,

"... set out their policy on local standards in the Local Plan ...they should assess the likely cumulative impacts on development in the area of all existing and proposed local standards, supplementary planning documents and policies that support the development plan, when added to nationally required standards."

Implicitly, therefore, the NPPF continues the approach set out in the former PPG17 of requiring councils to adopt locally determined standards for open space, sport and recreation provision, a key outcome of this revised parks and open spaces strategy.

Making Space for Nature (MSN)

MSN also highlights the decline in biodiversity and fragmentation of wildlife habitats, resulting in a reduction in the benefits that ecosystems deliver. It suggests that the overall aim for England's ecological networks should be to ensure that

"Compared to the situation in 2000, biodiversity is enhanced and the diversity, functioning and resilience of ecosystems re-established in a network of spaces for nature that can sustain these levels into the future, even given continuing environmental change and human pressures."

Natural England's Green Infrastructure Guidance (GIG)

Natural England has been promoting the concept of green infrastructure (GI) for some years. However, its initial attempts concentrated on trying to persuade local authorities to adopt its Accessible Natural Parks and open space Standard (ANGSt) which set out an aspiration that everyone should be able to access a range of green spaces of different sizes within fixed maximum distances from their home. ANGSt had two main failings. First, it ignored the requirement in the former PPG17 that

provision standards for open space should be locally determined; and second, it was simply unachievable in many areas. GI thinking has now moved on to focus more on the planned use of natural systems and processes (ecosystems) than what was ultimately an arbitrarily determined set of standards.

DEFRA's Green Infrastructure Partnership (GIP)

This is reflected in the work of the Green Infrastructure Partnership, which fulfils a commitment in the Natural Environment Green Paper, it brings together a wide range of organisations with a remit of:

Finding ways to provide green infrastructure in towns, cities, and rural areas.

Address barriers that might prevent this progress.

Develop and evidence base on the condition of England's green infrastructure and how it meets the needs of communities.

Demonstrate the many benefits that green infrastructure can bring.

Look into how communities, planners and decision-makers can best be supported in designing and developing green infrastructure; and

Help people to quantify the costs and benefits of investing in green infrastructure and make the case for green infrastructure projects.

The Partnership defines GI as "a planned network of green spaces and other environmental features including street trees, gardens, green roofs, community forests, parks, rivers, canals and wetlands". It has gone on to commission research on six broad topics:

- How to design and retrofit GI.
- How to plan GI for ecosystem services.
- How to work with communities.
- How to implement GI at the local level.
- How to value and make the case for GI; and
- How to ensure that people have the skills and knowledge to deliver improved GI

Countryside & Rights of Way (CROW) Act (2000) and Natural Environment & Rural Communities Act (2006)

Both the Acts refer to GI by recognising the need for strategic and open access, Local Access Forums and the duty of public bodies to have regard for biodiversity.

The Biodiversity Strategy for England, Biodiversity 2020: A Strategy for England's Wildlife and Ecosystem Services (2011)

Builds on the Natural Environment White Paper and Lawton report and the role planning and development has in taking “a strategic approach to planning for nature”. It sets out the Government’s objectives and main actions to halt the loss of biodiversity by 2020 and to ensure the intrinsic value and benefits associated with biodiversity are fully recognised by society. The emphasis is very much about planning for biodiversity at a landscape scale.

Section 2: Local Context

Open Space Assessment – October 2018

The Council commissioned an Open Space Assessment prepared by Knight Kavanagh and Page. The assessment provides detail with regard to what open space provision exists in the area, its condition, distribution and overall quality. This study was intended to assist in the Councils process of preparing a new Local Plan for the area and a Strategy for Parks and Open Spaces. As part of this, it has reviewed the evidence base which will help to inform better understanding of the community needs and priorities for investment. The recommendations and priorities take into consideration the findings of the assessment report as well as population distribution, health and deprivation levels and planned growth. The study also gives guidance on the consideration of potential disposal sites in areas found to have sufficient open space.

Chesterfield Local Plan 2018 - 2033

Sets out a strategy for development across the borough until 2033. It identifies which broad areas are suitable for development.

It also established a presumption against the loss of open space, play provision and sports facilities unless certain criteria are met. In broad terms it seeks to maintain and enhance existing provision in the Borough unless there is clear evidence of a surplus. This was formulated in the absence of an up to date evidence base on open space, outdoor sports and recreation. The Examination Inspector stated a need for further evidence to be prepared as a matter of urgency.

As part of the Councils preparation for a new Local Plan it is concurrently reviewing its land holdings to help inform future decision-making policy. Local Plan Policies that relate directly to open space are set out below.

CLP15 Green Infrastructure

Chesterfield borough's green infrastructure network will be recognised at all levels of the planning and development process with the aim of protecting enhancing, linking, and managing the network, and creating new green infrastructure where necessary. Development proposals should demonstrate that they will not adversely affect, or result in the loss of, green infrastructure, unless suitable mitigation measures or compensatory provision are provided.

Development proposals should, where relevant:

- a) not conflict with the aim and purposes of the Green Belt (as set out in the NPPF); and
- b) not harm the character and function of the Green Wedges and Strategic Gaps; and
- c) enhance connectivity between, and public access to, green infrastructure; and
- d) (i) protect and enhance access to the multi-user trails network as shown on the Policies Map; and (ii) increase the opportunities for cycling, walking and horse riding; and
- e) enhance the multi-functionality of the Borough's formal and informal parks and open spaces; and
- f) protect or enhance Landscape Character; and
- g) increase tree cover in suitable locations in the borough to enhance landscape character, amenity, and air quality; and
- h) where new green infrastructure is proposed, there must be clear funding and delivery mechanisms in place for its long-term management and maintenance, prior to the development commencing.

Where necessary and appropriate development will be expected to make a contribution through planning obligations or CIL towards the establishment, enhancement and on-going management of green infrastructure by contributing to the development of a strategic green infrastructure network within Chesterfield Borough.

CLP16 Biodiversity, Geodiversity, and the Ecological Network

The council will expect development proposals to:

- protect, enhance and contribute to the management of the borough's ecological network of habitats, protected and priority species and sites of international, national and local importance (statutory and non-statutory), including sites that meet the criteria for selection as a local wildlife site or priority habitat; and
- avoid or minimise adverse impacts on biodiversity and geodiversity; and

- provide a net measurable gain in biodiversity.

CLP17 Open Space, Play Provision, Sports Facilities and Allotments

Where proposed development would result in a need for new open space and outdoor sports facilities and/or exacerbate existing deficiencies in provision, development must contribute to public open space, sports facilities and play provision in accordance with the council's adopted standards as set out in Appendix B of the Local Plan and in line with the following requirements:

- a) on-site in a suitable location taking account of accessibility wherever possible; or
- b) where on site provision is not feasible or suitable, as a financial contribution to the creation of a new facility off-site or the upgrading and improvement of an existing facility, secured by planning obligation or CIL; or
- c) where new public open space is to be provided on site, as multifunctional, fit for purpose space that supports local community's health and wellbeing and activity levels and the ecological network.

Contributions to off-site provision will be secured through CIL and/or S106 agreements as appropriate.

On-site provision will be incorporated into development proposals with suitable management and maintenance arrangements secured through S106 agreements. Planning permission will not be granted for development which would have a negative impact on, or result in the loss of, open space, play provision and/or sports facilities unless:

- a) the site is clearly surplus to requirements and the land is not needed or is not suitable to meet a deficiency in a different type of open space provision; or
- b) equivalent or better alternative open space provision in terms of quantity, quality and accessibility will be provided on a replacement site; or
- c) the development is for alternative sports and/or recreational provision, the benefits of which clearly outweigh the loss of the current or former use.

Deprivation factors

The latest indices of multiple deprivation figures, health profile, official labour market statistics (NOMIS) and child poverty statistics indicate that despite extensive investment to grow Chesterfield's economy, our communities are still struggling to access the proceeds of growth due to a variety of factors including poor health, caring responsibilities and poor educational and skills attainment.

Key issues include:

- Estimated 5600 children in poverty
- Ranked 86th worst out of 317 local authorities for overall indices of multiple deprivation, 64th income, 40th employment, 13th health,
- Life expectancy 9.8 years lower for people in the most deprived areas of Chesterfield compared to the least deprived
- Over 1000 people presenting as homeless each year

Our Lives, Our Health - Derbyshire Health and Wellbeing Strategy 2018-2023

Vision and Priorities for Derbyshire

The Health and Wellbeing Strategy 2018 outlines five priority areas on which the Health and Wellbeing Board will focus activity over the coming years.

Our priorities are to:

- Enable people in Derbyshire to live healthy lives
- Work to lower levels of air pollution
- Build mental health and wellbeing across the life course
- Support our vulnerable populations to live in well-planned and healthy homes
- Strengthen opportunities for quality employment and lifelong learning

In Derbyshire, 20.9% of the population is physically inactive, similar to the England average of 22.2%. However, the prevalence of overweight and obesity in both adults and young children is significantly higher than the national average. Only 40.4% of babies in Derbyshire are breastfed for at least 6 weeks, compared to an England average of 44.4%. Further, only half of 15-year olds eat 5 portions or more of fruit and vegetables per day, rising to 57.8% in adults.

The 'Towards an Active Derbyshire' strategy seeks cultural transformation that makes Derbyshire more active through providing co-ordinated choice, motivation, and support for physical activity. Delivery of the strategy is a partnership between a wide range of stakeholders – led by Active Derbyshire – that focuses on reducing physical inactivity in women and girls, young people and those living in more deprived communities. Delivery will be through a wide range of initiatives for example encouraging active travel and supporting the development of local opportunities to be active.

Joint Strategic Needs Assessment

Draws together information in order to forecast the main health and wellbeing needs of Derbyshire people over the next 15 years. It provides a snapshot of the current health and wellbeing of residents. The JSNA supports re-design of services to ensure demand is met and health inequalities are identified in order to set a framework across services and agencies. A series of reports are provided to help provide profiles to some of the key areas to be addressed.

Chesterfield Borough Council Plan 2019 - 2023

The Council Plan helps us to effectively invest and deploy our time, resources, and energy to support key services and work with residents, partners, and businesses to ensure that everyone in the borough can achieve their full potential.

The Council Plan includes our priorities for the next four years:

- Making Chesterfield a thriving borough
- Improving quality of life for local people
- Providing value for money services

These are the activities on which we will focus our efforts and want to see a real shift in over the four years. The four-year plan allows us time to plan ahead without trying to speculate about what our communities will need and expect in the distant future.

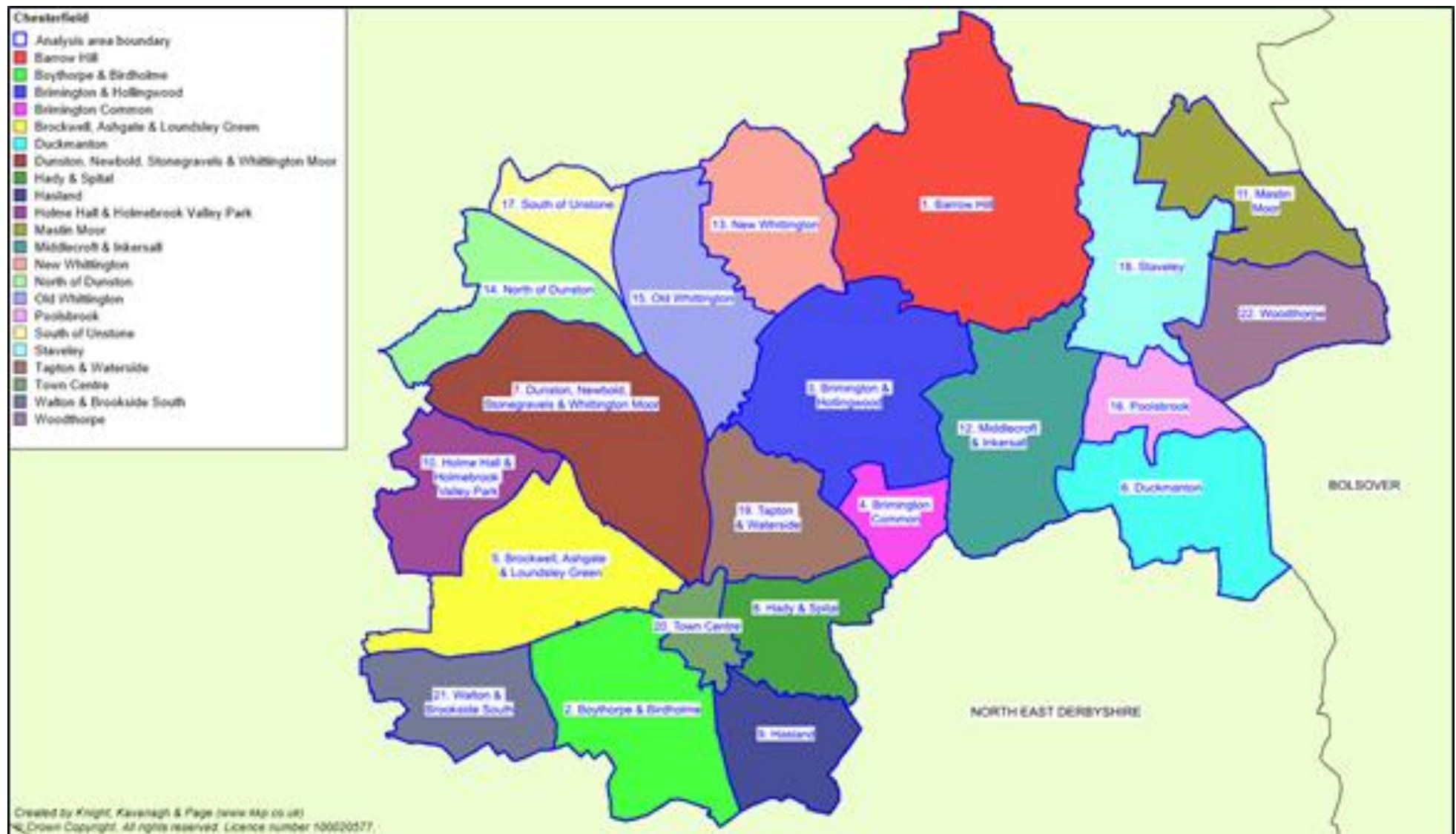
Section 3: Parks and Open Space Audits – our methodology

Analysis area and population

The whole of the Chesterfield Borough area is used for the purposes of mapping and initial audit analysis. The assessment splits Chesterfield into 22 analysis areas in order to provide a more detailed level of analysis and to help inform future requirements and any future parks and open space recommendations.

The 22 analysis areas are intended to reflect the recognisable places of the different areas of Chesterfield. These relate to the 19 Wards across Chesterfield. They also reflect known barriers to movement such as major roads (e.g. A61, A619 and A617), railways (e.g. Midland Main Line) and waterways (e.g. Chesterfield Canal and River Doe Lea). The map below shows the 22 analysis areas.

Figure 1 Analysis areas



Chesterfield is estimated to have a population of 104,440 (need to mark Office of national statistics and year – latest is 104,600 - 2019). This is used throughout the strategy to help calculate the current provision levels in hectares per 1,000 population. i.e. area of open space (in hectares) per 1000 people (head of population).

Population figures for each of the 22 analysis areas are set out in the table below. ONS Mid-Year 2016 figures at a Lower Super Output level are initially utilised. These are then allocated to reflect the number of residential dwellings located within one of the 22 analysis areas.

Analysis areas with estimated populations.

Analysis area	Estimated population
Barrow Hill	1,388
Boythorpe & Birdholme	12,715
Brimington & Hollingwood	9,851
Brimington Common	1,410
Brockwell, Ashgate & Loundsley Green	14,960
Duckmanton	1,067
Dunston, Newbold, Stonegravels & Whittington Moor	16,231
Hady & Spital	3,961
Hasland	7,416
Holme Hall & Holmebrook Valley Park	5,474
Mastin Moor	1,718
Middlecroft & Inkersall	7,462
New Whittington	4,385
North of Dunston	12
Old Whittington	4,108
Poolsbrook	1,037
South of Unstone	149
Staveley	3,028
Tapton & Waterside	1,529
Town Centre	544
Walton & Brookside South	5,498
Woodthorpe	497

Set out below is the methodology the Council used when assessing its parks and open spaces.

Auditing local provision

The assessments focussed on those sites that are publicly accessible (i.e. generally private sites or land, which people cannot access, are not included). The exception is for allotments which are not open to the general public, but which are used by members of the community. Sites are initially identified using existing mapping data from previous and related studies.

In accordance with best practice recommendations, a size threshold of 0.2 hectares is applied to the inclusion of some typologies within the study. Sites of a smaller size, particularly for the typologies of amenity parks and open space and natural and semi-natural parks and open space tend to have a different role. Often this is for visual purposes (e.g. small incremental grassed areas such as highway verges) and is therefore considered as offering less recreational use in comparison to other forms of open space. Subsequently sites below 0.2 hectares for these typologies are not audited.

Each site is classified based on its primary open space purpose, so that each type of space is counted only once. However, the multi-functional role and use of some types of open space is acknowledged. A total of 283 sites are identified and included within the study. The audit, and the report, utilise the following typologies in accordance with best practice:

- Parks and Gardens
- Natural and Semi natural green space
- Amenity parks and open space
- Provision for Children and young people
- Allotments
- Cemeteries/churchyards
- Green Corridors

All information relating to each open space is collated into a database.

Quality and value

Each type of open space (included within the sample audit) receives separate quality and value scores.

Quality and value are fundamentally different and can be unrelated. For example, a high-quality space may be inaccessible and, thus, be of little value; whereas a rundown (poor quality) space may be the only one in an area and thus be immensely valuable. As a result, quality and value are also treated separately in terms of scoring.

Analysis of quality

Data collated from site visits is initially based upon those derived from the Green Flag Award scheme (a national standard for parks and green spaces in England and Wales, operated by Keep Britain Tidy). This is utilised to calculate a quality score for each site visited. Scores in

the database are presented as percentage figures. The quality criteria used for the open space assessments carried out for all open space typologies are summarised below:

- Physical access, e.g. public transport links, directional signposts,
- Personal security, e.g. site is overlooked, natural surveillance
- Access-social, e.g. appropriate minimum entrance widths
- Parking, e.g. availability, specific, disabled parking
- Information signage, e.g. presence of up to date site information, notice boards
- Equipment and facilities, e.g. adequacy and condition of provision such as seats, benches, bins, toilets
- Site problems, e.g. presence of vandalism, graffiti
- Healthy, safe and secure, e.g. fencing, gates, staff on site
- Maintenance and cleanliness, e.g. condition of general landscape & features
- Groups that the site meets the needs of, e.g. elderly, young people

Within the databases the criteria are weighted to reflect their level of importance to each different open space typology. For example, a greater presence and variety of ancillary facilities (e.g. seating, bins, paths, play equipment, landscaping, etc.) and their management is expected at a park than in comparison to an amenity parks and open space or other type of open space. This is intended to reflect the general role and use of each open space type.

Analysis of value

Site visit data plus desk-based research is calculated to provide value scores for each site identified. Value is defined in best practice guidance in relation to the following three issues:

- Context of the site i.e. its accessibility, scarcity value and historic value.
- Level and type of use.
- The wider benefits it generates for people, biodiversity, and the wider environment.

In addition, the NPPF refers to attributes to value such as beauty and attractiveness of a site, its recreational value, historic and cultural value and its tranquillity and richness of wildlife. These elements are all considered as part of the value scoring:

- Level of use (observations only), e.g., evidence of different user types (e.g. dog walkers, joggers, children) throughout day, located near school and/or community facility
- Context of site in relation to other open spaces and proximity to housing
- Structural and landscape benefits, e.g., well located, high quality defining the identity/ area
- Ecological benefits, e.g., supports/promotes biodiversity and wildlife habitats
- Educational benefits, e.g., provides learning opportunities on nature/historic landscapes
- Social inclusion and health benefits, e.g., promotes civic pride, community ownership and a sense of belonging; helping to promote physical and mental well-being
- Cultural and heritage benefits, e.g., historic elements/links (e.g. listed building, statues) and high-profile symbols of local area

- Amenity benefits and a sense of place, e.g., attractive places that are safe and well maintained; helping to create specific neighbourhoods and landmarks
- Economic benefits, e.g., enhances property values, promotes economic activity, and attracts people from near and far

Quality and value thresholds

To determine whether sites are high or low quality (as recommended by guidance); the results of the site assessments are colour-coded against a baseline threshold (high being green and low being red). The primary aim of applying a threshold is to identify sites where investment and/or improvements may be required. It can also be used to set an aspirational quality standard to be achieved in the future and to inform decisions around the need to further protect sites from future development (particularly when applied with its respective value score in a matrix format).

The only national benchmark available for quality of parks and open spaces is the 66% pass rate for Green Flag. However, the Green Flag pass rate is not appropriate for every open space typology as it is designed to represent a sufficiently high standard of provision.

For example, a park would be expected to feature a greater presence and variety of ancillary facilities (e.g. seating, bins, paths, play equipment, landscaping, etc.) in comparison to an amenity parks and open space or other type of open space.

Furthermore, the 66% threshold for Green Flag is not appropriate as a different scoring mechanism is used (albeit the criteria for this study is derived from the categories used as part of Green Flag).

For each typology a different set or weighting for each criterion of quality is used. This is in order to better reflect the different roles and uses of each open space type. Consequently, a different threshold level is set for each open space typology.

In order to distinguish between higher and lower quality sites, the quality thresholds are set to reflect the average scores for each typology within the Borough. For example, the average of the 95 amenity parks and open space sites to receive a score is 64%. Consequently, the quality threshold is set at 60% (setting the threshold at 65% only provides a limited number of sites below the threshold and which does not reflect known sites of a lower quality). In our experience this works as an effective initial method to reflect local levels of provision and their variability.

Quality and Value thresholds by typology

Typology	Quality threshold	Value threshold
Parks and gardens	55%	20%
Natural and semi-natural parks and open space	40%	20%
Amenity parks and open space	60%	20%
Provision for children and young people	60%	20%
Allotments	50%	20%
Cemeteries/churchyards	60%	20%
Green corridors	60%	20%

For value, there is no national guidance on the setting of thresholds. The 20% threshold applied is derived from our experience and knowledge in assessing the perceived value of sites.

A high valued site is one deemed to be well used and offering visual, social, physical, and mental benefits. Value is also a more subjective measure than assessing the physical quality of provision. Therefore, a conservative blanket threshold of 20% is set. Whilst 20% may initially seem low - it is a relative score. One designed to reflect those sites that meet more than one aspect of the criteria used for assessing value (as detailed earlier). If a site meets more than one criterion for value it will score greater than 20%. Consequently, it is deemed to be of higher value.

Identifying local need

In the spring and early summer of 2018, the council undertook a consultation exercise to identify local need for open space provision. This was carried out via a combination of face-to-face meetings, surveys, and telephone interviews. An online community survey and a survey for children to complete were also hosted. These were promoted by the Council with 671 community survey responses and 236 children's survey responses being received.

The purpose of the surveys was to gather views of the public and highlight their opinions regarding the accessibility, amount, and quality of open spaces in Chesterfield. It helps to statistically support the audit assessment findings in relation to quality, quantity, and access of provision. This in turn helps to inform any future actions and recommendations for parks and open spaces in the borough.

The findings of the consultations are used, reviewed, and interpreted to further support the results of the quality and value assessment.

Travel and Access catchments

Accessibility catchments for different types of provision are a tool to identify communities currently not served by existing facilities. It is recognised that factors that underpin catchment areas vary from person to person, day to day and hour to hour. For the purposes of this process, this problem is overcome by accepting the concept of 'effective catchments', defined as the distance that would be travelled by the majority of users.

Catchment areas are overlaid on the mapping of sites to help identify potential gaps in provision. In effect these are circular 'as the crow flies' areas (radial catchments). They do not simulate actual walking distances based on pedestrian routes or barriers to movement. However, significant barriers to movement are also mapped to help recognise instances where access to open space provision may be restricted. The use of radial catchment areas is a common and accepted method to identify potential gaps in provision (as set out in best practice such as FIT and Companion Guidance to PPG17).

Results of the community survey have been used to set initial accessibility catchments. These are presented in Table 5 and are applied to help inform potential deficiencies in each form of open space provision.

No catchments are set for the typologies of cemeteries. It is difficult to assess such typologies against catchment areas due to their nature and usage. For cemeteries, provision should be determined by demand for burial space.

Travel and Access catchments from respondents

Open space type		Accessibility catchment	Equivalent radial distance
Parks & Gardens		15-minute walk time	1,200m
		30-minute drive time to country parks	n/a
Natural & Semi-natural Parks and open space		15-minute walk time	1,200m
		30-minute drive time	n/a
Amenity Parks and open space		15-minute walk time	1,200m
Play areas & provision for young people	Children's play	15-minute walk time	1,200m
	Youth provision	15-minute walk time	1,200m
Allotments		15-minute walk time	1,200m
		15-minute drive time	n/a

Section 4: Open Space Assessment – audit results and analysis

Parks and gardens

This typology often covers urban parks and formal gardens (including designed landscapes), which provide accessible high-quality opportunities for informal recreation and community events. Country park sites may also provide opportunities and functions often associated with parks and should therefore be recognised within a parks section.

There are 20 sites classified as parks and gardens. This is an equivalent of over 111 hectares. No site size threshold has been applied and, as such, all known sites are included within the typology.

Parks overview

Analysis area	Parks and gardens		
	Number	Size (ha)	Current provision (ha per 1,000 population)
Chesterfield	20	111.19	1.06

The largest site and biggest contributor to provision is Tapton Park (16.2 hectares). This is followed by Somersall Park (15.2 hectares). Other significant providers are Ringwood Park (9.8 hectares), Highfield Park (9.5 hectares) and Queens Park (8.7 hectares)

Fields In Trust (FIT) suggests 0.80 hectares per 1,000 population as a guideline quantity standard. Overall, Chesterfield has a current provision level of 1.06 hectares per 1,000 population which sufficiently surpasses the FIT suggested standard.

Country parks can be considered to offer a dual role. Sites predominantly provide opportunities linked with natural greenspace but also offer many features associated with parks provision. However, to ensure no double counting of sites they are classified within natural and semi-natural greenspace but recognised within the parks and gardens typology.

If the sites were to be included within the quantity of parks provision, due to their dual role, the current levels of provision would greatly increase. The provision levels for parks and gardens would still exceed the FIT suggested standard.

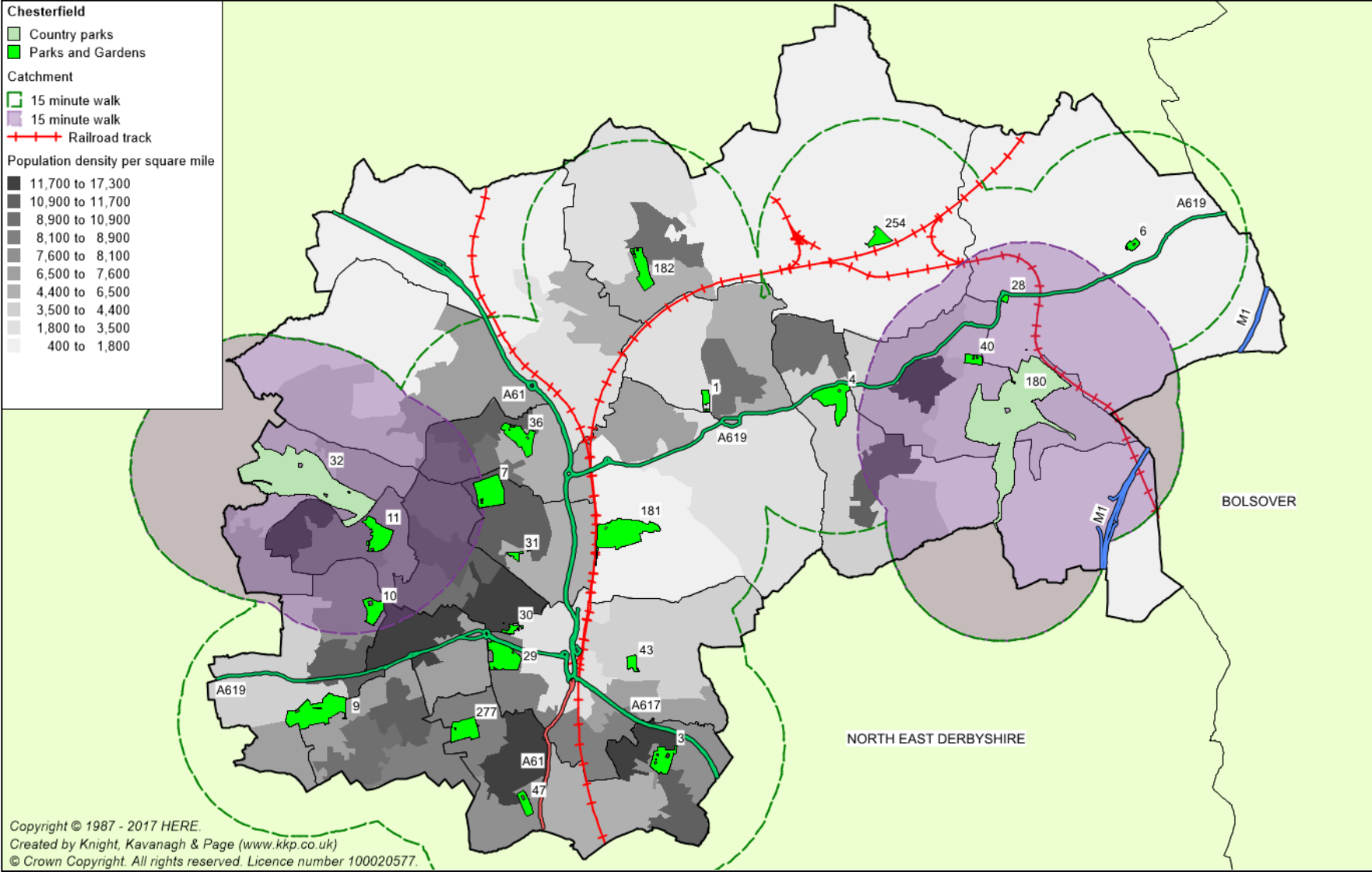
Parks overview (including country parks)

Analysis area	Parks and gardens (inc country parks)		
	Number	Size (ha)	Current provision (ha per 1,000 population)
Chesterfield	22	241.01	2.31

Respondents to the community survey were asked how satisfied they are with how much open space exists in the area. No issue with regard to availability of parks is highlighted. Nearly half of respondents (45%) rate being quite satisfied with the how much parks provision exists. A further 27% state they are very satisfied. Further supporting the existing amount of provision is the smaller percentage of respondents that are either quite dissatisfied (9%) or very dissatisfied (8%).

The community survey found the most common mode of travel to access a park is by non-vehicle methods (e.g. walking, running etc). Over three quarters of respondents (77%) state they access a park by non-vehicle means. This is followed by 16% of respondents that identify accessing park provision via private car. A further 4% state accessing via cycling. The most common times willing to be travelled by survey respondents is up to 15 minutes (30%). This is closely followed by those willing to travel up to 10 minutes (26%). On this basis, a 15-minute walk (equivalent to 1,200m) has been applied to all parks to reflect the most popular walk time. The map below shows the catchment mapping. Country parks are also shown to reflect the dual role such forms of provision provide. Only a 15-minute walk time to the country parks is shown as the 30-minute drive time applied to country parks covers the whole of Chesterfield as well as surrounding local authorities. For this reason, the drive time catchment is not shown in the mapping.

Parks and gardens mapped against 15-minute walk time catchment



Key to sites mapped

Site ID	Site name	Quality score	Value score
1	Thistle Recreation Ground (Eastwood Rec)	60.3%	45.7%
3	Eastwood Park	80.4%	85.7%
4	Ringwood Park	62.7%	61.0%
6	Wickins Place Doorstep Green	59.9%	45.7%
7	Highfield Park	58.9%	50.5%
9	Somersall Park	72.0%	56.2%
10	Wasps Nest (Inkerman Playing Field)	54.7%	53.3%
11	Loundsley Green Park	43.9%	49.5%
28	Staveley Memorial Gardens	49.3%	43.8%
29	Queen's Park	82.3%	94.3%
30	Shentall Gardens	58.7%	41.9%
31	Abercrombie Community Park	55.0%	39.0%
36	Stand Road Recreation Ground	67.7%	61.9%
40	King George V Park	58.0%	60.0%
43	Valley Road Recreation Ground/Spital Park	49.9%	45.7%
47	Langerfield Park	54.8%	56.2%
181	Tapton Park	68.3%	52.4%
182	Brearley Park & Wetlands	56.9%	61.0%
254	Station Road Recreation Ground	58.0%	57.1%
277	Boythorpe Park	53.1%	52.4%

Some gaps in the 15-minute walk time catchment are initially highlighted to a few areas of the Borough including;

- Barrow Hill
- Brimington Common
- Ducknanton
- Mastin Moor
- North of Dunston
- Old Whittington
- South of Unstone
- Woodthorpe

In most instances these appear to be areas of low population density. In addition, the identified barriers to movement are likely to further impact on access to provision in areas such as Woodthorpe, Brimington and Hollingwood, Middlecroft and Inkersall.

Respondents to the community survey were asked how satisfied they are with how close open space in the area is. No issue with regard to 'closeness' of parks is highlighted. Nearly half of respondents (47%) rate being very satisfied with the how close parks provision is. A further 38% state they are quite satisfied. Further supporting the existing amount of provision is the smaller percentage of respondents that are either quite dissatisfied (4%) or very dissatisfied (3%).

To determine whether sites are high or low quality (as recommended by best practice); scores from site assessments are colour-coded against a baseline threshold (high being green and low being red). The table overleaf summarises the results of the quality assessment for parks. A threshold of 55% is applied in order to identify high and low quality. Further explanation of how the quality scores and thresholds are derived can be found in Part 2 (Methodology).

Quality ratings for parks

Analysis area	Scores (%)			Spread	No. of sites	
	Lowest score	Average score	Highest score		Low <55%	High ≥55%
Chesterfield	44%	61%	86%	42%	4	16

Over three quarters of parks provision (80%) is rated as being above the quality threshold. There are only four sites to rate below the quality threshold. It is worth acknowledging that most of the sites only just score below the quality threshold of 55%.

The four sites to rate below the threshold are:

- Langerfield Park (54.8%)
- Staveley Memorial Gardens (51.4%)
- Spital Park (49.9%)
- Loundsley Green Park (43.9%)

No specific quality issues are observed at the sites. The sites should not necessarily be considered as poor quality as scoring is a relative concept. The ratings therefore tell us that these four sites, in comparison to other park sites, are not considered as being of a similar level of quality.

There are 18 sites to rate above the threshold. The highest scoring sites are:

- Queen's Park (85.8%)
- Eastwood Park (80.4%)
- Somersall Park (72.0%)

- Tapton Park (68.3%)
- Stand Road Recreation Ground (67.7%)

The sites are generally identified as containing a range of ancillary features and facilities including play equipment (for a wide range of ages), sporting opportunities (i.e. football, cricket), wildlife promotion and other facilities such as toilets, café, and car parking. There are also active Friends Groups providing additional benefits to the quality and use of the site. In general, the overall appearance and maintenance at the sites is observed as excellent. The quality of the sites is reflective of Queens Park and Eastwood Park achieving Green Flag Award status.

Most respondents to the community survey are generally satisfied with the quality of parks provision. Over a third of respondents' rate quality as quite satisfactory (40%) with a further 19% rating provision as very satisfactory. There is a small proportion of respondents that are either quite dissatisfied (16%) or very dissatisfied (12%) with quality of parks.

Green Flag

The Green Flag Award scheme is licensed and managed by Keep Britain Tidy. It provides national standards for parks and greenspaces across England and Wales. Public service agreements identified by the Department for Communities and Local Government (DCLG) highlight the importance placed on Green Flag status as an indicator of high quality. This in turn impacts upon the way parks and gardens are managed and maintained.

A survey by improvement charity GreenSpace highlights that parks with a Green Flag Award provide more satisfaction to members of the public compared to those without it. Its survey of 16,000 park users found that more than 90% of Green Flag Award park visitors were very satisfied or satisfied with their chosen site, compared to 65% of visitors to non-Green Flag parks.

There are six sites in Chesterfield identified as achieving Green Flag Award status (2019/20). Two of these are identified as park sites. The Green Flag Award sites are:

- Eastwood Park
- Queen's Park

Other non-park Green Flag Award sites are:

- Chesterfield Crematorium
- Chesterfield Canal
- Holmebrook Valley Country Park
- Poolsbrook Country Park

To be successfully awarded a Green Flag, sites must be considered to be maintained and managed to a high standard. The work of both the Council maintenance team and the Friends of Groups located at sites are important to their continuing achievement.

To determine whether sites are high or low value the scores from the site assessments have been colour-coded against a baseline threshold (high being green and low being red). The table below summarises the results of the value assessment for parks. A threshold of 20% is applied in order to identify high and low value.

Value scores for parks

Analysis area	Scores (%)			Spread	No. of sites	
	Lowest score	Average score	Highest score		Low <20%	High ≥20%
Chesterfield	39%	51%	90%	51%	0	20

All 20 sites score above the threshold for value. The four Green Flag Award sites are the highest rating parks for value:

- Queen’s Park (94.3%)
- Eastwood Park (85.7%)
- Brearley Park (61.0%)
- Stand Road Recreation Ground (57.1%)

This is likely in part to reflect the high quality of such sites but also their role in facilitating a range of educational, social and well-being benefits.

All parks provide opportunities for a range of users and demonstrate the high social inclusion, health benefits and sense of place that parks can offer. One of the key aspects of the value placed on parks provision is their ability to function as a multipurpose form of open space provision.

Parks provide opportunities for local communities and individuals to socialise and undertake a range of different activities, such as exercise, dog walking and taking children to the play area. Furthermore, parks can have ecological value, providing habitats for a variety of wildlife. Taking all this into account, parks and gardens are recognised as being heavily integrated into people’s everyday lives.

Natural and semi natural greenspace

The natural and semi-natural greenspace typology can include woodland and scrub, grassland, heath or moor, wetlands, wastelands, and bare rock habitats and commons. Such sites are often associated with providing wildlife conservation, biodiversity and environmental education and awareness.

In total, 33 sites are identified as natural and semi-natural greenspace, totalling nearly 314 hectares of provision. A minimum site size threshold of 0.2 hectares has been applied. Sites smaller than this are assumed to be of less or only limited recreational value to residents. However, they may still make a wider contribution to local areas, in relation to quality of life and health and wellbeing.

Natural and semi-natural greenspace overview

Analysis area	Natural and semi-natural		
	Number	Size (ha)	Current provision (ha per 1,000 population)
Chesterfield	33	313.80	3.00

The biggest contributor to natural and semi-natural provision is Poolsbrook Country Park at 73 hectares. Other noticeably large sites include Holmebrook Valley Country Park (57 hectares), Norbriggs Flash at 37 hectares, Netherthorpe Flash (29 hectares), West Wood (24 hectares) and Cobnar Wood (19 hectares)

Fields In Trust (FIT) suggests 1.80 hectares per 1,000 population as a guideline quantity standard for natural and semi-natural provision. Overall, Chesterfield has a current provision level of 3.00 hectares per 1,000 population. This sufficiently surpasses the FIT suggested standard.

It is important to recognise that other forms of open space such as parks and amenity greenspace may also provide opportunities and activities associated with natural and semi-natural greenspace.

Respondents to the community survey were asked how satisfied they are with how much open space exists in the area. No issue with regard to availability of nature reserves, commons or woodlands is highlighted. Over two fifths of respondents (42%) rate being quite satisfied with how much natural provision exists. A further 25% state they are very satisfied. Further supporting the existing amount of provision is the smaller percentage of respondents that are either quite dissatisfied (10%) or very dissatisfied (4%).

A slightly greater proportion of respondents (47%) rate being quite satisfied with how much country parks provision exists. A further 28% state they are very satisfied. Further supporting the existing amount of provision is the smaller percentage of respondents that are either quite dissatisfied (6%) or very dissatisfied (3%).

Three sites identified as being designated as Local Nature Reserves (LNRs). These are:

- Bluebank Woods
- Brearley Wetlands
- Norbriggs Flash

All three are recognised for their habitats and wildlife promotion. A brief summary of each site is set out below.

Types of designation

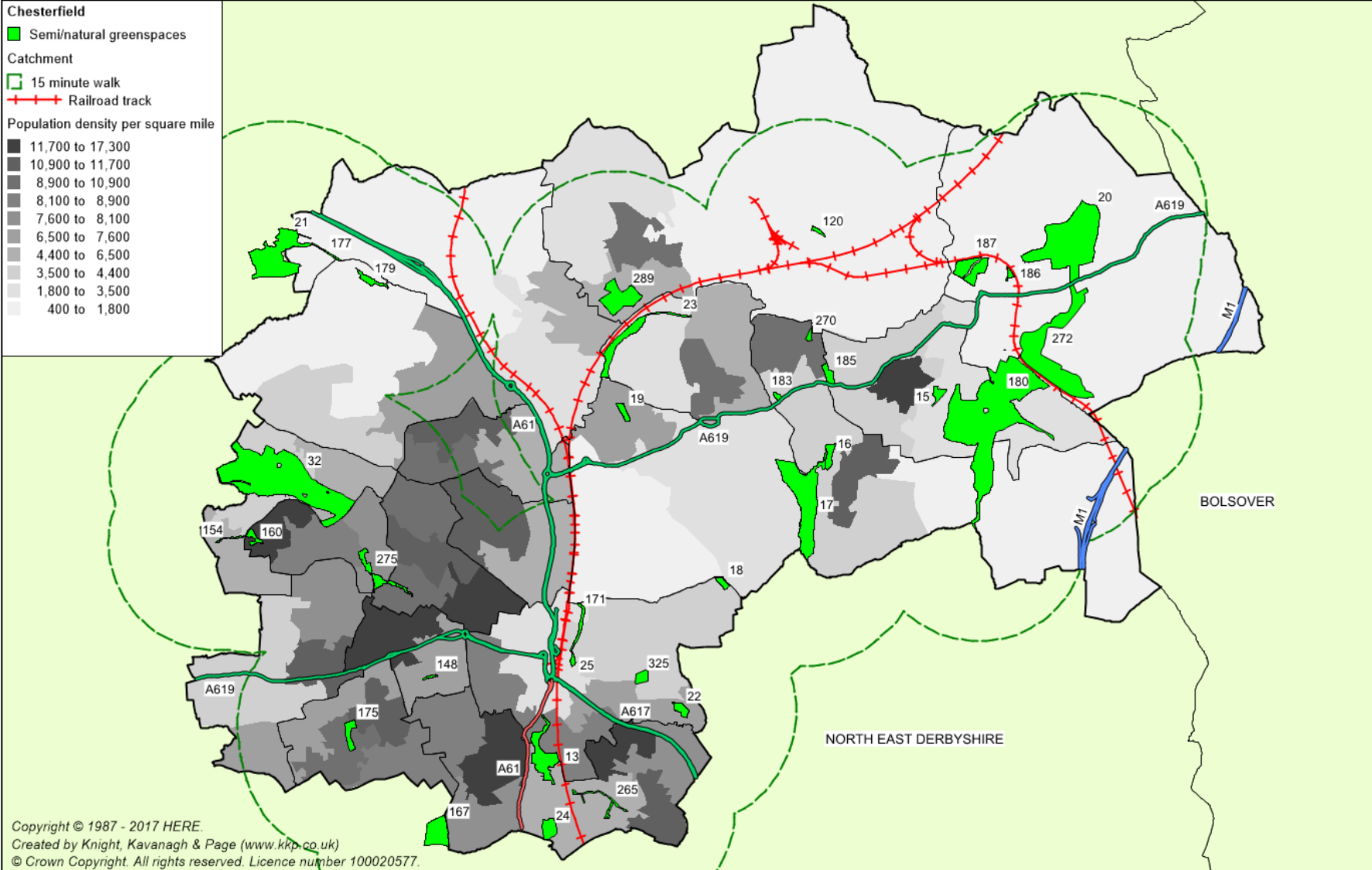
Designation	Description
Bluebank Woods	An unusual feature is the oxbow pools created when the River Rother was straightened as part of the railway development. A variety of wildlife can be seen including voles, kingfishers, grass snakes etc.
Brearley Wetlands	Habitats on site include wet grasslands, hedgerows, and scrub. Specifics such as invertebrates and migrating birds may be seen.
Norbriggs Flash	Mosaic of species rich grassland, open water, surrounding reed beds and marginal aquatic vegetation. Site is important for wintering wading birds and wildfowl.

The community survey found the most common mode of travel to access a nature reserve, common or woodland is by private car (55%). This is followed by non-vehicle means (32%). A similar trend is also demonstrated for country parks; with 65% of respondents stating they access provision via private car.

The most common time willing to be travelled by respondents to access a nature reserve, common or woodland is up to 30 minutes (32%); followed by 15 minutes (22%). A similar trend is also demonstrated for country parks; with 36% of respondents stating they would travel up to 30 minutes.

On this basis, a 15-minute walk time and 30-minute drive time have been applied to natural and semi-natural greenspaces across Chesterfield. The map below shows the walk time catchment applied. A 30-minute drive time covers the whole of Chesterfield as well as surrounding local authorities. For this reason, it is not shown in the mapping.

Natural and semi-natural greenspace mapped against 15-minute walk time



Key to sites mapped

Site ID	Site name	Quality score	Value score
13	Rother Recreation Ground & Washlands	64.6%	49.5%
15	Haddon Place	43.4%	42.1%
16	Land Adjacent to Bevan Drive	36.4%	38.9%
17	West Wood	54.5%	36.8%
18	Plover Wood	33.3%	37.9%
19	Wheeldonmill Planation	48.5%	33.7%
20	Norbriggs Flash	62.0%	55.8%
21	Cobnar Wood	39.4%	36.8%
22	Hady Plantation	29.3%	37.9%
23	Bluebank Wood	61.3%	50.5%
24	McGregor's Pond	55.9%	49.5%
25	Wakeley Recreation Ground	34.3%	33.7%
32	Holmebrook Valley Country Park	95.6%	58.9%
120	Campbell Drive Plantation	47.5%	35.8%
148	Sycamore Avenue	53.5%	35.8%
154	Off Langley Close	59.3%	30.5%
160	Tansley Drive Woodland	65.7%	50.5%
167	Gorsey Knowe	55.2%	37.9%
171	Riverside Park	63.6%	44.2%
175	Walton Plantation	54.5%	36.8%
177	Barlow Brook	36.4%	33.7%
179	Smeckley Wood Close	39.4%	34.7%
180	Poolsbrook Country Park	84.8%	68.4%
183	Land Adjacent Pear Tree Close	32.3%	26.3%
185	Troughbrook Wood	32.3%	41.1%
186	Pullman Close Plantation	41.4%	38.9%
187	Staveley Town Basin	52.5%	47.4%
265	Hasland Corridor	52.5%	33.7%
270	Land off Private Drive	30.3%	29.5%
272	Netherthorpe Flash	38.4%	38.9%
275	Purbeck Avenue/Penine Way	66.0%	40.0%
289	Brearley Wetland	53.5%	45.3%
325	Spital Park Woods	51.5%	37.9%

Gaps in the 15-minute walk time catchment are initially highlighted to a few areas of the Borough including;

- Barrow Hill
- Duckmanton
- Dunston, Newbold, Stonegravels and Whittington Moor
- New Whittington
- Walton and Brookside South

In most instances these appear to be areas of low population density. In addition, the identified barriers to movement are likely to further impact on access to provision in areas such as Duckmanton, South of Unstone and Woodthorpe.

Respondents to the community survey were asked how satisfied they are with how close open space in the area is. No issue with regard to ‘closeness’ of natural sites is highlighted; 42% of respondents rate being quite satisfied with how close natural provision is. A further 30% state they are very satisfied. Further supporting the existing amount of provision is the smaller percentage of respondents that are either quite dissatisfied (8%) or very dissatisfied (3%).

Similarly, 44% of respondents rate being quite satisfied with how close country parks provision is. A further 31% state they are very satisfied. Further supporting the existing amount of provision is the smaller percentage of respondents that are either quite dissatisfied (7%) or very dissatisfied (2%).

To determine whether sites are high or low quality (as recommended by the Companion Guidance) scores from the site assessments are colour-coded against a baseline threshold (high being green and low being red). The table below summarises the results of the quality assessment for natural and semi-natural greenspace. A threshold of 40% is applied in order to identify high and low quality.

Quality ratings for natural and semi-natural greenspace

Analysis area	Scores (%)			Spread	No. of sites	
	Lowest score	Average score	Highest score		Low <40%	High ≥40%
Chesterfield	29%	51%	96%	66%	11	22

Natural and semi-natural greenspace has a lower quality threshold than some other open space typologies such as parks. This is in order to reflect the wide-ranging characteristics of provision. For instance, some natural and semi-natural sites are intentionally without ancillary facilities as they focus on wildlife habitats whilst others are more centred on recreational use.

Of the natural and semi-natural provision assessed, a total of 22 sites (66%) rate above the threshold set for quality. There are 11 sites which rate below the quality threshold applied.

The lowest scoring sites are:

- Hady Plantation (29.3%)
- Land off Private Drive (30.3%)
- Land adjacent Pear Tree Close (32.3%)
- Troughbrook Wood (32.3%)
- Plover Wood (33.3%)

Sites scoring below the threshold for quality tend to lack basic ancillary features such as benches and bins. However, as previously mentioned, this can be due to their primary role as forms of habitat provision. However, they mainly score below the threshold due to an appearance of a lack of maintenance (narrow/overgrown pathways) which impacts on their access and usage.

Most sites scoring above the threshold are observed as being more attractive due to the perceived higher levels of maintenance and cleanliness as well as the recreational uses on offer.

The highest scoring sites are:

- Holmebrook Valley Country Park (95.6%)
- Poolsbrook Country Park (84.6%)
- Tansley Drive Woodland (69.7%)
- Norbriggs Flash (67.0%)
- Purbeck Avenue/Pennine Way (66.0%)
- Bluebank Wood (65.3%)

These sites are observed as having better maintained pathways, appropriate boundary fencing as well as good signage. All the above sites score well for overall maintenance and cleanliness, drainage, and pathways.

Holmebrook Valley Country Park is the highest scoring site. It is noted as containing a range of features and ancillary facilities (e.g. café, car parking, play equipment, sports provision etc). The sites high score is likely a reflection of its offer; as well as its status as a Green Flag Award site.

Quality of natural provision for most respondents to the community survey is generally satisfactory. Over half of respondents (51%) rate being quite satisfied with quality of nature reserves with a further 23% being very satisfied. Respondents also rate quality of country parks positively; with 50% rating quality as quite satisfactory and 25% rating it as very satisfactory.

Green Flag

There are six sites in Chesterfield identified as achieving Green Flag Award status (2019/20). Two of these are identified as natural and semi-natural sites:

- Holmebrook Valley Country Park
- Poolsbrook Country Park

Other non-natural Green Flag Award sites are:

- Chesterfield Crematorium
- Chesterfield Canal
- Eastwood Park
- Queen's Park

To determine whether sites are high or low value (as recommended by the Companion Guidance) scores from site assessments have been colour-coded against a baseline threshold (high being green and low being red). The table below summarises the results of the value assessment for natural and semi-natural greenspace. A threshold of 20% is applied in order to identify high and low value.

Value scores for natural and semi-natural greenspace

Analysis area	Scores (%)			Spread	No. of sites	
	Lowest score	Average score	Highest score		Low <20%	High ≥20%
Chesterfield	26%	41%	68%	42%	0	33

All of the assessed natural and semi-natural greenspace sites rate above the value threshold. The sites to rate the highest for value are:

- Poolsbrook Country Park (68.4%)
- Holmebrook Valley Country Park (58.9%)
- Norbriggs Flash (55.8%)
- Bluebank Wood (50.5%)
- Tansley Drive Woodland (50.5%)
- Rother Recreation Ground & Washlands (49.5%)
- Mc Gregor's Pond (49.5%)

Excluding McGregor’s Pond, the other sites listed above are also some of the highest scoring sites for quality. The high quality and value score for such sites is reflective of their role and importance to the local area.

Norbriggs Flash and Bluebank Wood are both designated as LNR’s. The former features an interpretation board about the site’s history and species; which adds to its onsite educational value. The other LNR site, Brearley Wetland, also rates highly for value with 45.3%. Rother Recreation Ground & Washlands scores highly for value. This is partly due to wide pathways and a cycle path enabling a range of users including wheelchair users to access the site. It also has small football goals on the grass area. Together these elements enhance the sites social, sport and recreation value.

Sites rating above the value threshold often demonstrate the added benefit natural and semi-natural greenspaces can provide especially in terms of contributing to flora and fauna promotion and habitat opportunities. There are only three natural sites with a LNR designation in place. This demonstrates the role and importance such sites provide especially in terms of natural provision. Prominent sites of this type can even act as a destination, attracting users from outside the local area.

Amenity greenspace

This is defined as sites offering opportunities for informal activities close to home or work or enhancement of the appearance of residential or other areas. It includes informal recreation spaces, housing green spaces, village greens and other incidental space.

There are 95 amenity greenspace sites in Chesterfield equivalent to over 93 hectares of provision. Sites are most often found within areas of housing and function as informal recreation space or open space providing a visual amenity. A number of recreation grounds and playing fields are also classified as amenity greenspace.

Amenity greenspace overview

Analysis area	Natural and semi-natural		
	Number	Size (ha)	Current provision (ha per 1,000 population)
Chesterfield	95	93.31	0.89

A large proportion of provision may be considered as being smaller grassed areas or roadside verges. However, there is some variation of sites within this typology. For example, the smallest site is Land adjacent to Arklow Close at 0.18 hectares whilst the largest site is Hasland Hall Playing Fields at over 4.96 hectares. Larger recreation grounds and playing fields serve a different purpose to smaller grassed areas and verges; often providing an extended range of opportunities for recreational and sporting activities due to their size.

It is important to recognise the role of the Playing Pitch Strategy (PPS) with regard to such sites. Some playing fields and recreation grounds included within the Open Space Assessment will also be included within a PPS. These sites are covered by the Open Space Assessment to reflect the multi-functional role of such forms of provision.

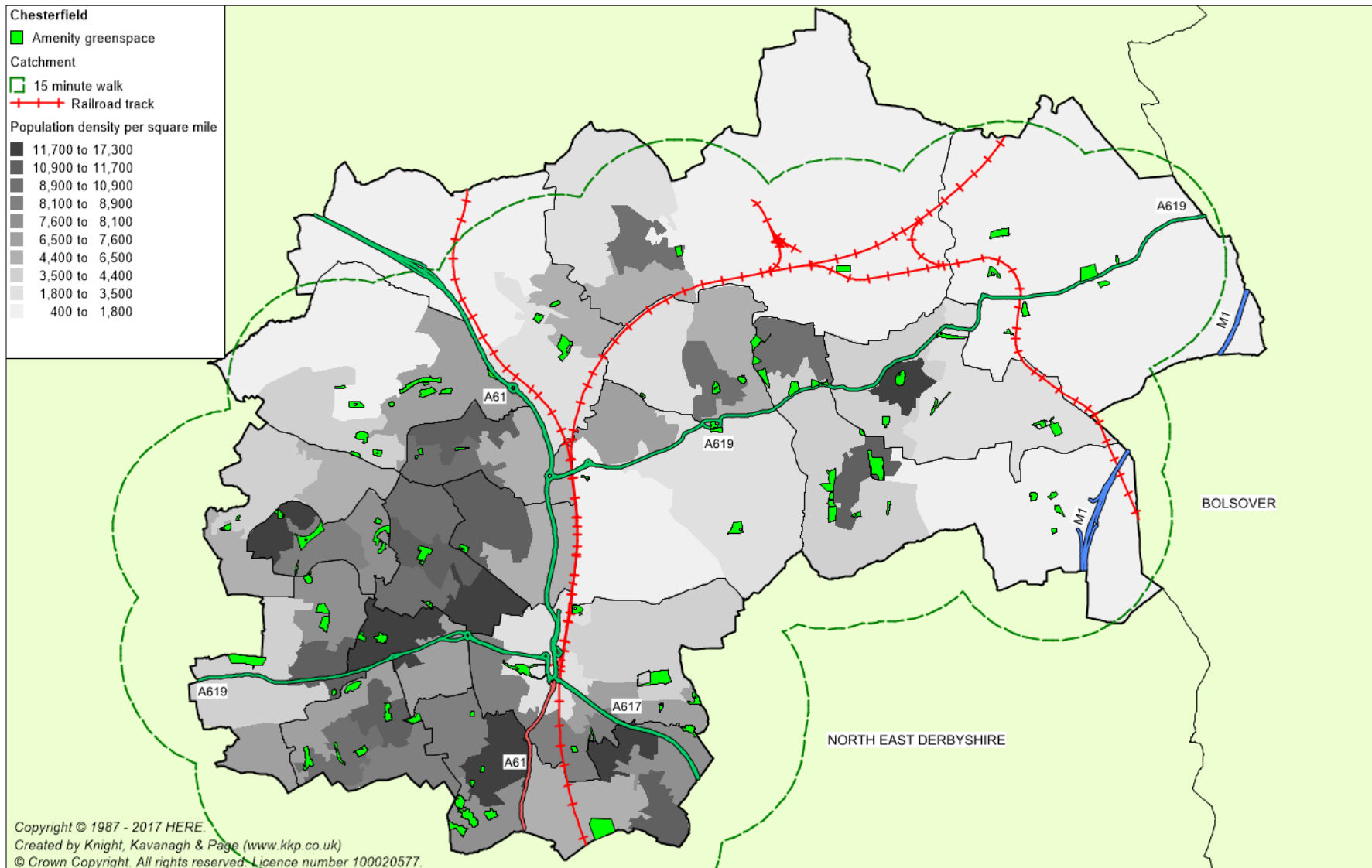
Fields In Trust (FIT) suggests 0.60 hectares per 1,000 population as a guideline quantity standard. Overall, Chesterfield has a current provision level of 0.89 hectares per 1,000 population which sufficiently surpasses the FIT suggested standard.

Respondents to the community survey were asked how satisfied they are with how much open space exists in the area. Just over a third of respondents (37%) rate being quite satisfied with the how much amenity greenspace provision exists. A further 15% state they are very satisfied. Further supporting the existing amount of provision is the smaller percentage of respondents that are either quite dissatisfied (10%) or very dissatisfied (3%).

The community survey found the most common mode of travel to access an amenity greenspace is by non-vehicle methods (i.e. walking, running etc.). Nearly two thirds of respondents (62%) state they access an amenity greenspace by non-vehicle means. This is followed by 20% of respondents that identify accessing amenity greenspace provision via private car.

The most common times willing to be travelled by survey respondents is up to 10 minutes (23%) and up to 15 minutes (22%). A further 16% state they would travel up to 30 minutes. On this basis, a 15-minute walk (equivalent to 1,200m) has been applied to all amenity greenspace to reflect a significant proportion of respondents will walk up to 15 minutes. This is shown in map below.

Amenity greenspace mapped against 15-minute catchment



Key to sites mapped

Site ID	Site name	Quality score	Value score
2	Badger Recreation Ground	66.3%	33.0%
5	Inkersall Green Playing Field	81.8%	52.1%
8	Hady Playing Field	65.8%	39.4%
34	Hartington Recreation Ground	61.0%	40.4%
35	Hilltop Road	59.9%	36.2%
37	BRSA Sports Ground, Station Road	50.8%	26.6%
38	Off Alpine Grove	63.1%	34.0%
41	Poolsbrook Recreation Ground	66.9%	41.5%
44	Manor Road Recreation Ground	79.1%	59.6%
51	Pearsons Recreation Ground	77.0%	41.5%
52	Netherleigh Road	87.2%	48.9%
53	Chester Street Recreation Ground (The Monkey Park)	67.4%	43.6%
114	Kendal Road Recreation Ground	59.4%	29.8%
115	Church Street	78.6%	44.7%
116	Wensley Way	59.0%	23.4%
117	Edinburgh Road	80.2%	46.8%
118	Poolsbrook Road	55.6%	40.4%
119	Newbridge Lane	65.8%	33.0%
121	Brushfield Recreation Ground	65.2%	48.9%
122	Markham Road Open Space	33.2%	22.3%
123	Bellmont Drive	75.9%	35.1%
124	The Pingles	74.3%	35.1%
125	Netherthorpe Recreation Ground	65.2%	35.1%
126	Land to West of St Philips Drive	63.1%	31.9%
127	Land at Cherry Tree Grove	67.4%	36.2%
128	Off Ravensdale Close	66.3%	38.3%
129	Peak View Road	65.8%	35.1%
130	Princess Street	67.0%	34.0%
131	Sheldon Road	65.8%	47.9%
132	Coniston Road and Rydal Close	74.3%	40.4%
133	Circular Road	71.3%	35.1%
134	Rockley Close	65.8%	35.1%
135	Moston Walk	66.3%	42.6%
136	Kirkstone Road	71.1%	46.8%

Site ID	Site name	Quality score	Value score
137	Hall Road	71.7%	39.4%
138	Cuttholme Road	70.6%	30.9%
139	Roecar Close Open Space	59.4%	28.7%
140	Woolgrove AGS	64.2%	37.2%
141	Land South of Coniston Road	60.4%	34.0%
142	Land Adjacent Kirkstone Road	59.9%	27.7%
143	Damon Drive	56.2%	36.2%
144	Thirlmere Road	73.8%	36.2%
145	Windermere Road	65.8%	34.0%
146	Somersby Avenue	64.7%	46.8%
147	Wingerworth Way Open Space	65.2%	34.0%
149	Land Adjacent Salisbury Avenue	67.4%	39.4%
150	Healthy Living Centre Open Space	64.2%	29.8%
151	Pevensey Green	80.2%	62.8%
152	Land Adjacent Newbold Road	77.0%	35.1%
153	Land South of Rydal Crescent	61.5%	34.0%
155	Haddon Close	69.5%	29.8%
156	Summerskill Green	75.0%	52.1%
157	Greenways	55.1%	23.4%
158	Elm Street	40.6%	21.3%
161	Gypsy Lane Amenity Area	43.3%	26.6%
162	Dovedale Avenue	57.8%	35.1%
163	Cottage Close	54.6%	28.7%
164	Spire Walk	63.6%	52.1%
165	Haddon Close 2 Amenity Space	69.0%	43.6%
166	Harehill Road	65.1%	34.0%
169	Lockoford Amenity Greenspace	68.6%	37.2%
170	St David's Rise	65.8%	36.2%
172	Barnes Road	65.2%	33.0%
173	Spital Lane Recreation Ground	61.0%	33.0%
197	Cavendish Place	59.9%	35.1%
209	North of Brookfield Avenue	56.2%	27.7%
219	Land Adjacent Stubbing Road	73.8%	42.6%
226	Land off Kingsley Avenue	66.8%	42.6%
227	Land Adjacent Baines Wood Close	54.6%	28.7%
233	Land North of Albert Street North	72.7%	31.9%
240	Land Adjacent Grindlow Avenue	64.2%	40.4%

Site ID	Site name	Quality score	Value score
245	Glencoe Way	61.0%	33.0%
248	Land Adjacent B6039	75.9%	26.6%
249	Land adjacent to Arklow Close	68.5%	31.9%
251	Norbriggs Playing Field	71.7%	34.0%
252	Hassop Road Amenity Space	75.6%	43.6%
255	Albert Road Amenity Greenspace	52.4%	35.1%
258	Pennine Way Amenity Greenspace	69.0%	36.2%
259	Loundsley Green Road Amenity Space	67.9%	47.9%
260	Brushfield Road Amenity Greenspace	66.8%	36.2%
263	Walton Dam Pitches North	50.1%	30.9%
267	Heathcote Drive	77.0%	40.4%
269	Crow Lane Amenity Space	72.0%	52.1%
271	Westwood Drive Amenity Space	62.0%	39.4%
273	East Crescent North	50.3%	29.8%
274	East Crescent West	67.9%	35.1%
283	Madin Drive/Bradshaw Road	62.6%	39.4%
284	Kinder Road	63.1%	34.0%
285	Madin Drive/Jarvis Place	55.6%	34.0%
286	Maple Street	50.3%	23.4%
287	Land South of Maple Street	71.7%	33.0%
288	Land North of Sycamore Road	47.1%	20.2%
326	Hasland Hall Playing Fields	48.7%	45.7%
328	Norbriggs Road	48.1%	24.5%
332	Brampton Rec	44.4%	28.7%
333	Boythorpe AGS*		

Mapping demonstrates a good distribution of amenity greenspace provision across the area; the majority of areas with a higher population density are being served by a catchment of an amenity greenspace. However, gaps in the 15-minute walk time catchments are initially highlighted to a few areas of the Borough; most noticeably Barrow Hill and South of Unstone.

In addition, the identified barriers to movement are likely to further impact on access to provision in areas such as Barrow Hill and Woodthorpe. The Strategy will explore in more detail the potential gaps in provision on an analysis area basis.

Respondents to the community survey were asked how satisfied they are with how close open space in the area is. Over a third (37%) rate being quite satisfied with how close amenity greenspace provision is. A further 22% state they are very satisfied. Further supporting the existing amount of provision is the smaller percentage of respondents that are either quite dissatisfied (5%) or very dissatisfied (2%).

To determine whether sites are high or low quality (as recommended by the Companion Guidance); the scores from site assessments have been colour-coded against a baseline threshold (high being green and low being red). The table below summarises the results of the quality assessment for amenity greenspaces. A threshold of 60% is applied in order to identify high and low quality.

Quality ratings for amenity greenspace

Analysis area	Scores (%)			Spread	No. of sites	
	Lowest score	Average score	Highest score		Low <60%	High ≥60%
Chesterfield	33%	65%	87%	57%	26	69

A total of 73% of assessed amenity greenspace sites rate above the threshold for quality.

The highest scoring sites for are:

- Netherleigh Road (aka Manor Fields) (87.2%)
- Inkersall Green Playing Field (81.8%)
- Pevensey Green (80.2%)
- Edinburgh Road (80.2%)

The sites are observed as having high standards of maintenance and cleanliness, resulting in a good overall appearance. In addition, they provide sufficient security levels, bins, signage and pathways.

Netherleigh Road is the highest scoring site. It has a noticeboard, appropriate fencing and a good supply of benches and bins. It is well used especially by dog walkers. This site is managed by volunteers at the Manor Fields Association.

Similarly, Pevensey Green is maintained by the Friends of Pevensey Green. The site is observed as very neat and well-maintained with benches and bins. Despite this, consultation with the Group identify that the site is plagued by dog fouling and occasional vandalism. The site seems well used by locals and dog walkers.

Edinburgh Road and Inkersall Green Playing Field benefit from play areas which add to their quality and value. The latter also has a MUGA. Edinburgh Road also has a noticeboard about upcoming events; evidencing a level of community involvement and use.

Larger amenity greenspace sites such as recreation grounds and playing fields often lend themselves to greater sporting and recreational opportunities such as football. These opportunities as well as other added features on site, such as good quality play areas, provide increased reasons for people to visit such provision. Consequently, the quality of such sites is often to a higher standard. Of the sites highlighted as a recreation ground or playing field, 11 out of the 13 (85%) are rated as being above the quality threshold.

Some of the lowest scoring amenity greenspace sites are:

- Markham Road Open Space (33.2%)
- Elm Street (40.6%)
- Gypsy Lane Amenity Area (43.3%)
- Land North of Sycamore Road (47.1%)
- Hasland Hall Playing Fields (48.7%)

These sites all lack ancillary features such as bins and benches. They mainly score low due to a generally poorer level of appearance and perceived maintenance. For example, Hasland Hall Playing Fields has damaged fencing and very long grass. It has no specific paths but does seem reasonably used by dog walkers and contains a spacious grass area with a running track and rounders area.

Markham Road Open Space is observed as poorly maintained with overgrown grassed areas and unkept paths. The paths are narrow in parts with evidence of misuse (i.e. broken glass). Similarly, Elm Street is observed as having overgrown grass and thorns encroaching onto the pathways as well as appearing to be generally less well maintained.

Most respondents to the community survey are generally satisfied with the quality of amenity greenspace provision. Over a third of respondents' rate quality as quite satisfactory (37%) with a further 12% rating provision as very satisfactory. There is a small proportion of respondents that are either quite dissatisfied (7%) or very dissatisfied (4%) with the quality of amenity greenspace.

To determine whether sites are high or low value (as recommended by the Companion Guidance) site assessments scores are colour-coded against a baseline threshold (high being green and low being red). The table below summarises the results. A threshold of 20% is applied in order to identify high and low value.

Value ratings for amenity greenspace

Analysis area	Scores (%)			Spread	No. of sites	
	Lowest score	Average score	Highest score		Low <20%	High ≥20%
Chesterfield	15%	32%	60%	45%	6	89

Nearly all amenity greenspaces (94%) rate above the threshold for value. The highest scoring sites are:

- Manor Road Recreation Ground (59.6%)
- Pevensey Green (57.4%)
- Inkersall Green Playing Field (52.1%)
- Spire Walk (52.1%)
- Summerskill Green (52.1%)
- Crow Lane (52.1%)

These sites scoring high for value also score high for quality. They all appear well used, providing social and health benefits with suitable ancillary facilities to enable a wider range of people to use. Manor Road Recreation Ground and Inkersall Green Playing Field contain football goals, enhancing sport and recreation opportunities. Crow Lane and Spire Walk also feature play provision; further added to their appeal and social interaction benefits.

There are six sites to rate below the value threshold. These include:

- Land North of Sycamore Road (14.9%)
- Elm Street (16.0%)

- Markham Road Open Space (17.0%)
- Greenways (18.1%)
- Maple Street (18.1%)
- Wensley Way (18.1%)

The sites are all observed as being poorly maintained with a lack of pathways and other ancillary facilities. There is perceived to be little use of these sites. All six also rate below the threshold for quality.

Amenity greenspace should be recognised for its multi-purpose function, offering opportunities for a variety of leisure and recreational activities. It can often accommodate informal recreational activity such as casual play and dog walking. Many sites are likely to offer a dual function and are amenity resources for residents as well as being visually pleasing. These attributes add to the quality, accessibility, and visibility of amenity greenspace. Combined with the presence of facilities (e.g. benches, landscaping, and trees) this means that the better-quality sites are likely to be more respected and valued by the local community.

Provision for children and young people

This type of provision includes areas designated primarily for play and social interaction involving children and young people, such as equipped play areas, ball courts, skateboard areas and teenage shelters.

Provision for children is deemed to be sites consisting of formal equipped play facilities typically associated with play areas. This is usually perceived to be for children under 12 years of age. Provision for young people can also include equipped sites that provide more robust equipment catering to older age ranges. It can include facilities such as skate parks, BMX, basketball courts, youth shelters and Multi-Use Games Areas (MUGAs).

A total of 81 sites are identified in Chesterfield as provision for children and young people. This combines to create a total of more than five hectares. No site size threshold has been applied and as such all known provision is identified and included within the audit.

Provision for children and young people overview

Analysis area	Provision for children and young people		
	Number	Size (ha)	Current provision (ha per 1,000 population)
Chesterfield	81	5.17	0.05

Fields In Trust (FIT) suggests 0.25 hectares per 1,000 population as a guideline quantity standard. Overall, Chesterfield has a current provision level of 0.05 hectares per 1,000 population based on equipped play areas. However, there are instances where the surrounding open space of the site in which the play provision is located will also contribute to the play offer. If such sites are also included in the calculation, then a total of 37.17 hectares is identified; an equivalent to 0.36 hectares per 1,000 population.

There are a number of sites providing specific provision catering for older age ranges. In total there are seven sites recognised as offering substantial provision such as skate parks for older ages. These include:

- Eastwood Park
- Wickins Place
- Loundsley Green
- Stand Road
- Chesterfield Skate Park
- Brearley Park
- Station Road (Barrow Hill)

Respondents to the community survey were asked how satisfied they are with how much open space exists in the area. A quarter (25%) rate being quite satisfied with how many play areas for young people exists. A further 11% state they are very satisfied. However, a combined 26% state they are quite dissatisfied (13%) or very dissatisfied (13%).

For teenage provision, a total of 57% of respondents had no opinion. A slightly greater proportion of respondent's rate being quite dissatisfied (10%) or very dissatisfied (7%) compared to those that are quite satisfied (9%) or very satisfied (6%).

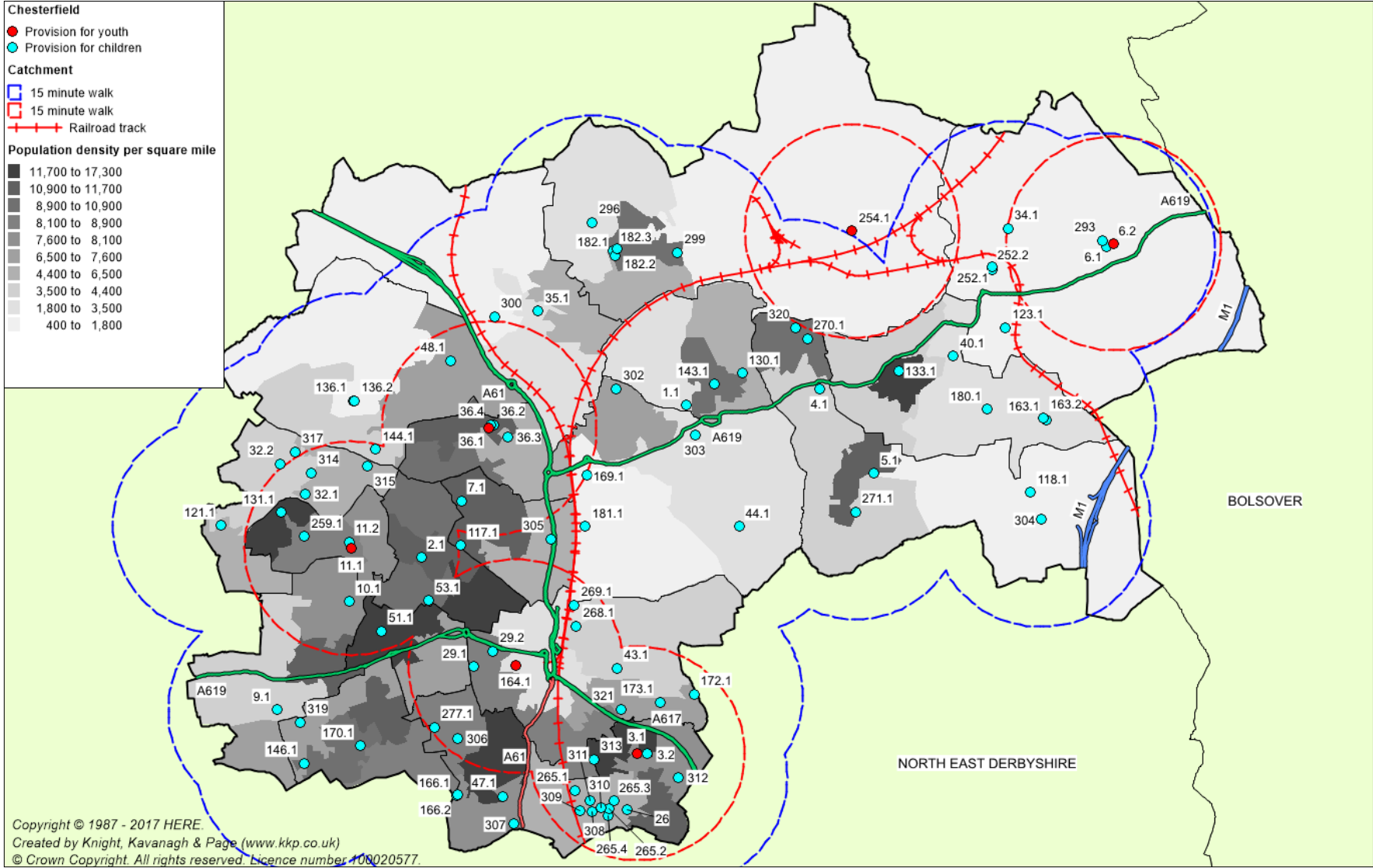
The community survey found that the most common mode of travel to access play areas for children is by non-vehicle methods (i.e. walking, running etc).

Nearly half of respondents (49%) state they access a play area by non-vehicle means. This is followed by 18% of respondents that identify accessing play areas for children via private car.

The most common times willing to be travelled by survey respondents is up to 15 minutes (20%) and up to 10 minutes (19%). On this basis, a 15-minute walk has been applied to all play areas for children to reflect the most popular walk time.

Respondents to the survey also highlight that for provision catering for older ages (i.e. teenagers), the most popular mode of travel to access such provision is by non-vehicle means (12%) followed by private car (10%). The most common times to travel in order to access provision for teenagers are 15 minutes (9%), 30 minutes (8%) and 10 minutes (6%). Consequently, a 15-minute walk time to provision for teenagers is applied to the mapping to reflect the average travel time from respondents. This is shown in the map below.

Provision for children and young people mapped against catchments



A single quality and value score are attributed at sites where more than one form of play provision is identified.

Key to sites mapped

Site ID	Site name	Quality score	Value score
1.1	Thistle Park	76.8%	78.2%
2.1	Badger Play Area	61.8%	50.9%
3.1	Eastwood Park Play Area	88.6%	81.8%
3.2	Eastwood Park MUGA		
4.1	Ringwood Park	69.3%	72.7%
5.1	Inkersall Green	80.4%	89.1%
6.1	Wickins Place 2	62.7%	81.8%
6.2	Wickins Place 1		
7.1	Highfield Park play area and MUGA	62.4%	87.3%
9.1	Somersall Park Play Area	55.6%	74.5%
10.1	Wasps Nest	66.7%	83.6%
11.1	Loundsley Green skate park and MUGA	70.9%	85.5%
11.2	Loundsley Green play area		
26	Kirby Close Play Area	67.6%	16.4%
29.1	Queens Park Play Area	80.1%	89.1%
29.2	Queens Park Play Area 2		
32.1	Holmebrook Valley Park Play Area 1	66.7%	87.3%
32.2	Holmebrook Valley Park Play Area 2	89.9%	83.6%
34.1	Hartington Recreation Ground	62.1%	49.1%
35.1	Hilltop Road Play Area	81.4%	80.0%
36.1	Stand Road Skate Park	80.1%	87.3%
36.2	Stand Road Play Area		
36.4	Stand Road MUGA		
36.3	Stand Road Play Area 2	73.5%	85.5%
40.1	King George V Play Area	60.8%	74.5%
43.1	Valley Road	61.1%	74.5%
44.1	Manor Road Recreation Ground Play Area	81.7%	85.5%
47.1	Langerfield Park MUGA	80.4%	89.1%
48.1	Chesterfield Panthers Rugby Club MUGA	76.5%	85.5%
51.1	Pearsons Recreation Ground Play Area	52.9%	20.0%

Site ID	Site name	Quality score	Value score
53.1	Chester Street Recreation Ground Play Area	69.3%	81.8%
117.1	Edinburgh Road Play Area	91.2%	90.9%
118.1	Poolsbrook Road Play Area	54.9%	78.2%
121.1	Brushfield Recreation Ground	66.7%	83.6%
123.1	Bellmont Drive Play Area	69.6%	83.6%
130.1	Princess Street Play Area	54.2%	50.9%
131.1	Sheldon Road Play Area	54.2%	70.9%
133.1	Circular Road Play Area	68.3%	87.3%
136.1	Kirkstone Road Play Area	63.7%	81.8%
136.2	Kirkstone Road Play Area MUGA		
143.1	Damon Drive Play Area	67.6%	72.7%
144.1	Thirlmere Road Play Area	56.9%	80.0%
146.1	Stanford Way Play Area	88.2%	83.6%
163.1	Cottage Close Play Area 1	64.7%	81.8%
163.2	Cottage Close Play Area 2	56.9%	74.5%
164.1	Chesterfield Skate Park	62.4%	80.0%
166.1	Harehill Road Play Area	71.9%	85.5%
166.2	Harehill Road MUGA		
169.1	Lockoford Play Area	57.8%	38.2%
170.1	St Davids Rise Play Area	53.9%	41.8%
172.1	Barnes Road Play Area	67.6%	70.9%
173.1	Spital Lane Play Area	80.7%	70.9%
180.1	Poolsbrook Country Park	85.3%	72.7%
181.1	Tapton Park Play Area	53.6%	69.1%
182.1	Brearley Park Play Area	81.0%	78.2%
182.2	Brearley Park Skate Park		
182.3	Brearley Park MUGA		
252.1	Hassop Road	69.0%	87.3%
252.2	Hassop Road MUGA		
254.1	Station Road (Barrow Hill) play area and MUGA	70.6%	90.9%
259.1	Carsington Way	73.2%	72.7%
265.1	Knighton Close Play Area	74.8%	16.4%
265.2	Oadby Drive 1	61.8%	16.4%
265.3	Seagrave Drive	59.2%	34.5%
265.4	Harcourt Close	60.8%	69.1%

Site ID	Site name	Quality score	Value score
268.1	Wain Avenue	55.9%	36.4%
269.1	Crow Lane MUGA	66.3%	89.1%
270.1	Private Drive Play Area	80.4%	85.5%
271.1	Westwood Drive	51.3%	23.6%
277.1	Whitecotes Playing Field Play Area	71.6%	81.8%
293	Howells Place	51.6%	21.8%
296	Coupland Close	54.9%	43.6%
299	Devonshire Avenue Play Area	53.9%	70.9%
300	Holland Road	59.2%	72.7%
302	Windmill Way	75.5%	72.7%
303	Nethercroft LAP (Lark's Rise)	59.8%	40.0%
304	West Crescent Play Area	82.4%	90.9%
305	Canal Wharf Play area and MUGA	68.3%	83.6%
306	Whitecotes Park Play Area	58.8%	21.8%
307	Staunton Close	58.8%	20.0%
308	Bradgate Croft	64.7%	16.4%
309	Oadby Drive 3	65.4%	16.4%
310	Oadby Drive 2	69.9%	16.4%
311	Rempstone Drive	68.6%	61.8%
312	Heather Vale Road Play Area	76.5%	74.5%
313	Durley Chine	67.0%	50.9%
314	Parkside View	65.7%	18.2%
315	Stoops Close	50.3%	18.2%
317	Priestfield Gardens	62.7%	67.3%
319	Foxbrook Drive	58.8%	14.5%
320	Juniper Close	62.7%	20.0%
321	Rose Garth Close	55.9%	18.2%

Gaps in the 15-minute walk time catchments are initially highlighted to a few areas of the Borough; most noticeably Barrow Hill and South of Unstone.

There several gaps in provision catering for older age ranges. This is particularly noticeable to the eastern areas of the Borough.

In addition, the identified barriers to movement are likely to further impact on access to provision in areas such as Brockwell, Ashgate and Loundsley Green and Woodthorpe. There is generally a good spread of play provision across the area.

Greater population density areas are shown to be served by some form of play provision.

Respondents to the community survey were asked how satisfied they are with how close open space is in the area. Over a quarter of respondents (26%) rate being very satisfied with the how close play areas for young children is. A further 29% state they are quite satisfied. Further supporting the existing amount of provision is the smaller percentage of respondents that are either quite dissatisfied (6%) or very dissatisfied (4%).

Similar to responses for quantity, most (59%) had no opinion regarding teenage provision. There are 10% of respondents very satisfied and 11% as quite satisfied with the closeness of teenage provision. This is compared to those respondents which rate being either quite dissatisfied (6%) or very dissatisfied (5%). The results are likely a reflection to the role and use of such provision to older aged respondents.

In order to determine whether sites are high or low quality (as recommended by guidance); the scores from the site assessments have been colour-coded against a baseline threshold (high being green and low being red). The table below summarises the results of the quality assessment for play provision for children and young people. A threshold of 60% is applied in order to identify high and low quality.

Quality ratings for provision for children and young people

Analysis area	Scores (%)			Spread	No. of sites	
	Lowest score	Average score	Highest score		Low <60%	High ≥60%
Chesterfield	50%	67%	91%	41%	23	69

Overall, 75% of play sites rate above the quality threshold. There are however 23 sites which rate below the threshold.

Of the 23 sites to rate below the threshold, 18 are considered to be akin to localised areas of play (LAPs). These are generally small forms of play provision with often a limited range of equipment.

This links to a wider trend with observations from the site visit audit highlighting a number of sites with a lack of equipment. There are 25 sites noted as having a lack of equipment. In some instances, sites contain a single piece of equipment such as a springy or static play piece. Not all sites noted as having a lack of equipment rate below the quality threshold. However, the range and diversity of equipment at a site influences its quality and potential level of use. Consequently, sites with a limited scope of equipment are more likely to rate lower for quality and value.

In addition, site visit observations also highlight a tired and dated appearance at some play sites. There are 16 play sites with audit comments signalling the play equipment or the site in general to appear old and dated. For example, across the stock there are several sites which have old safety tile surfaces (the surface of choice for most play sites now tends to be wet pore or similar). Given the age of some of these surfaces, shrinkage and gapping is highlighted at several sites. These can present potential trip hazards.

Some of the lower scoring sites for quality are:

- Stoops Close (50.3%)
- Westwood Drive (51.3%)
- Howells Place (51.6%)
- Pearsons Recreation Ground Play Area (52.9%)

The example sites (above) are all identified as containing single pieces of play equipment. This is generally perceived as being of poor quality. In addition, surface quality, ancillary features (e.g. bins and seating) and site cleanliness all score low.

The majority of sites do however rate above the threshold. Some of the highest scoring sites include:

- Edinburgh Road Play Area (91.2%)
- Holmebrook Valley Park Play Area 2 (89.9%)
- Eastwood Park Play Area (88.6%)
- Poolsbrook Country Park (87.3%)

These sites are all noted as having a good range and imaginative forms of equipment catering for different ages. In addition, the equipment is in great condition as are the other features on site such as seating and bins. Sites such

as Eastwood and Poolsbrook contain outdoor gym equipment which further adds to their offer and appeal. The former also has a relatively new skate park facility.

Proportionally the larger play sites tend to score higher for quality. This is often due to a wider variety of equipment being present which caters towards a greater range of age groups. Such sites are also likely to be linked with additional ancillary facilities such as car parking, toilets, and refreshments.

Most respondents to the community survey are slightly negative with the quality of play areas for children. A total of 20% view quality as very dissatisfactory with a further 15% rating provision as quite dissatisfactory. There is a smaller proportion of respondents that are either quite satisfied (22%) or very satisfied (9%). The responses for teenage provision are more mixed. There are 6% quite dissatisfied and 8% very dissatisfied. Conversely, there are 10% of respondents who are quite satisfied and 5% very satisfied. More than half of respondents (61%) have no opinion.

To determine whether sites are high or low value (as recommended by the Companion Guidance) site assessment scores are colour-coded against a baseline threshold (high being green and low being red). The table overleaf summarises the results of the value assessment for children and young people. A threshold of 20% is applied in order to identify high and low value.

Value ratings for provision for children and young people

Analysis area	Scores (%)			Spread	No. of sites	
	Lowest score	Average score	Highest score		Low <20%	High ≥20%
Chesterfield	15%	63%	91%	76%	11	81

Nearly all play sites (88%) rate above the threshold for value. This demonstrates the important role play provision provides in allowing children to play but also the contribution sites make in terms of giving children and young people safe places to learn, for physical and mental activity, to socialise with others and in creating aesthetically pleasing local environments.

There are 11 sites to rate below the threshold for value. These are all identified as being sites containing only a single piece of equipment. Three of these sites also rate below the threshold for quality:

- Foxbrook Drive (14.5%)
- Stoops Close (18.2%)
- Rose Garth Close (18.2%)

High valued sites tend to reflect the size and amount as well as range of provision present. This often means sites are more popular and well used. Diverse equipment caters to a greater range of ages. Furthermore, such sites often provide added value in terms of healthy, active lifestyles, social inclusion and interaction between individuals whilst also adding to developmental and educational benefits.

Sites scoring particularly high for value tend to reflect the size and amount/range and role of equipment present on site. Some of the highest scoring sites for value are:

- Poolsbrook Country Park (90.9%)
- Station Road (Barrow Hill) (90.9%)
- West Crescent Play Area (90.9%)
- Crow Lane (89.1%)
- Inkersall Green (89.1%)
- Langerfield Park (89.1%)
- Queens Park (89.1%)

The three highest scoring sites for value are all observed as containing a variety of equipment. For example, Poolsbrook Country Park has a range of equipment including outdoor gym equipment; Station Road (Barrow Hill) features play equipment, a MUGA and a youth shelter; West Crescent Play Area has an extensive amount of equipment including a number of educational play panels with different languages.

Diverse equipment to cater for a range of ages is also essential. More specifically, provision such as skate park facilities and MUGAs are highly valued forms of play. Sites containing such forms of provision often tend to rate higher for value.

It is also important to recognise the benefits of play in terms of healthy, active lifestyles, social inclusion, and interaction between children plus its developmental and educational value. The importance of play and of children's rights to play in their local communities is essential.

Allotments

Allotments are a typology which covers open spaces that provide opportunities for those people who wish to do so to grow their own produce as part of the long-term promotion of sustainability, health, and social interaction. This includes provision such as allotments, community gardens and city farms.

There are 33 sites classified as allotments in Chesterfield, equating to over 40 hectares.

Distribution of allotment sites by analysis area

Analysis area	Provision for Allotments		
	Number	Size (ha)	Current provision (ha per 1,000 population)
Chesterfield	33	40.35	0.39

The largest forms of allotment provision are Grove Allotments at 3.49 hectares and Highfield Allotments at 3.27 hectares.

The National Society of Allotment and Leisure Gardeners (NSALG) suggests a national standard of 20 allotments per 1,000 households (20 per 2,000 people based on two people per house or one per 100 people). This equates to 0.25 hectares per 1,000 populations based on an average plot-size of 250 square metres (0.025 hectares per plot).

As a whole, Chesterfield, based on its current population (104,440) meets the NSALG standard. Using this suggested standard, the minimum amount of allotment provision is 26 hectares. Existing provision of 40 hectares therefore meets this guideline.

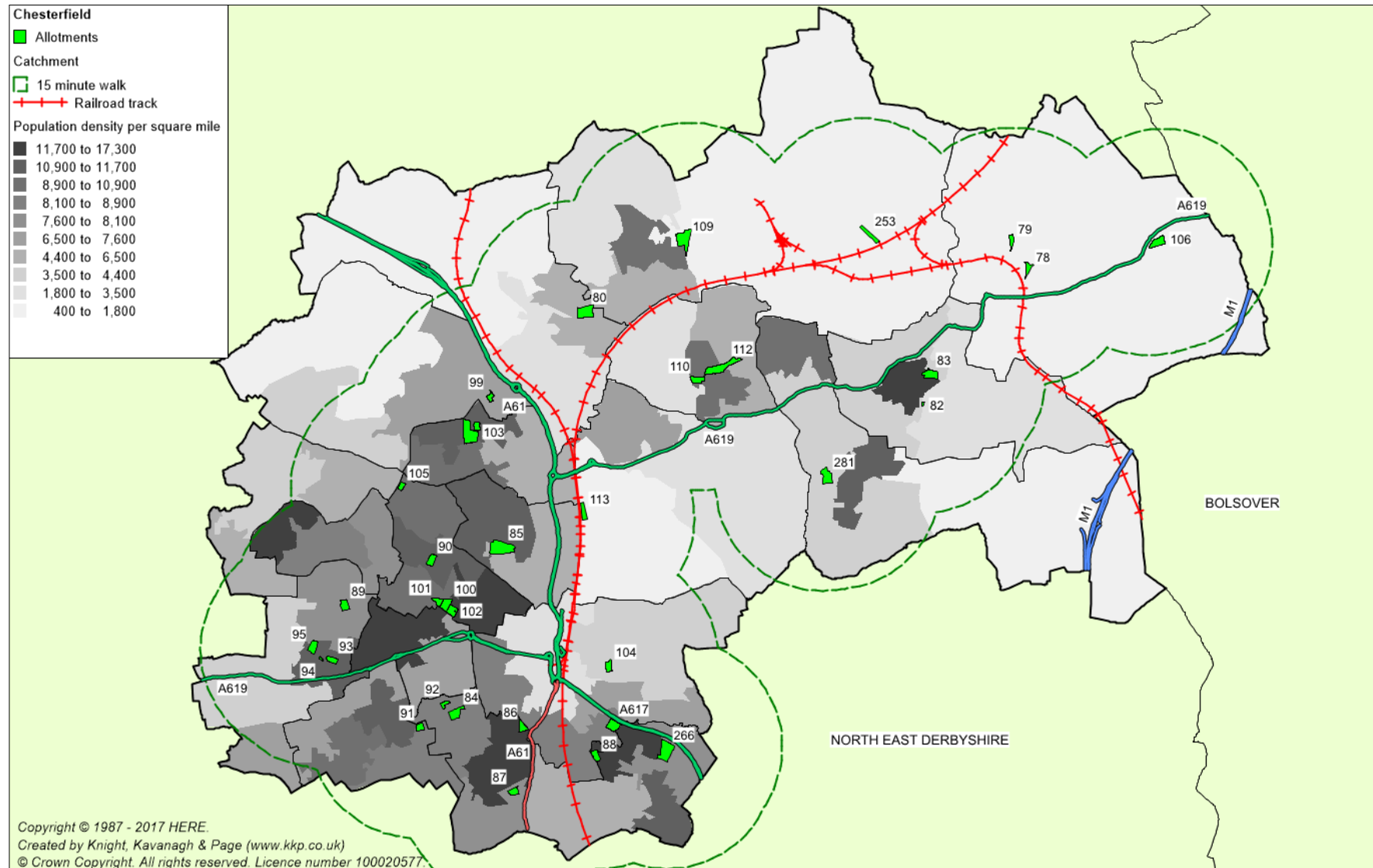
Respondents to the community survey were asked how satisfied they are with how much open space exists in the area. Just over half of respondents (50%) had no opinion on this. Excluding this, a greater proportion of respondents (16%) are neither satisfied nor dissatisfied with how much allotments exists. There are 18% of respondents that state being quite satisfied with how much provision exist. A further 8% state they are very satisfied. Further supporting the existing amount of provision is the smaller percentage of respondents that are either

quite dissatisfied (6%) or very dissatisfied (2%). The low response figures are reflective of the niche use of allotments to the wider public.

The community survey found the most common modes of travel to access an allotment is by non-vehicle methods (i.e. walking, running etc) (16%) and by private car (13%).

The most common times willing to be travelled by survey respondents is up to 10 minutes (11%) and up to 15 minutes (14%). On this basis, a 15-minute walk time (equivalent to 1,200m) and drive time have been applied to all allotments to reflect the most popular mode and travel times. This is shown in the map below.

Allotments mapped against 15-minute walk time catchment



Key to sites mapped

Site ID	Site name	Quality Score	Value score
78	Bellhouse Allotments	56.7%	25.6%
79	Hartington Allotments	54.4%	26.7%
80	Old Whittington Allotments	53.3%	27.8%
82	Calver Crescent Allotments	54.4%	25.6%
83	Middlecroft Allotments	60.0%	31.1%
84	Boythorpe Allotments	56.7%	27.8%
85	Highfield Allotments	57.8%	22.2%
86	St Augustine's Allotments	61.1%	27.8%
87	Hunloke Community Gardens	62.2%	48.9%
88	Storforth Lane Terrace Allotments	55.6%	28.9%
89	Ashgate Allotments	63.3%	28.9%
90	Brockwell Allotments	58.9%	24.4%
91	Off Hunloke Avenue Allotments	56.7%	23.3%
92	Rufford Close Allotments	60.0%	33.3%
93	Off Rhodesia Road Allotments	58.9%	22.2%
94	Quarry Lane Allotments	51.1%	21.1%
95	Old Road Allotments	65.6%	23.3%
99	Avenue Road Allotments (St John's Road)	58.9%	32.2%
100	Goldwell No 1 Allotments	65.6%	30.0%
101	Goldwell No 2 Allotments	67.8%	41.1%
102	Fairplay Community Garden	61.1%	26.7%
103	Grove Allotments (Stand Road)	57.8%	27.8%
104	Hady Hill Allotments	52.2%	25.6%
105	Littlemoor Allotments	58.9%	24.4%
106	Mastin Moor Community Garden	73.3%	55.6%
107	Penmore Allotments (Penmore Lane)	58.9%	30.0%
109	New Whittington Allotments	51.1%	27.8%
110	Coronation Road Allotments	61.1%	26.7%
112	King Street Allotments	61.1%	32.2%
113	Swaddale Allotments	35.6%	8.9%
253	Barrow Hill Allotments (Station Road)	51.1%	25.6%
266	Ashfield Road Allotments	68.9%	33.3%
281	Inkersall Allotments	53.3%	32.2%

The map above shows the distribution of allotment sites across the area against the 15-minute walk time catchment. A 15-minute drive time covers the whole of Chesterfield as well as some neighbouring local authorities. For this reason, it is not mapped.

Mapping demonstrates a good distribution of allotments provision across the area; most areas with a higher population density are being served by a catchment of an allotment. However, gaps in the 15-minute walk time catchments are initially highlighted to a few areas of the Borough including:

- Barrow Hill
- Duckmanton
- Holme Hall and Holmebrook Valley Park
- North of Dunston
- Poolsbrook
- South of Unstone

In addition, the identified barriers to movement are likely to further impact on access to provision in areas such as Mastin Moor and Walton and Brookside South. The Strategy will explore in more detail the potential gaps in provision on an analysis area basis.

Respondents to the community survey were asked how satisfied they are with how close open space in the area is. Nearly half of respondents (46%) had no opinion. No issue with regard to 'closeness' of parks is highlighted; a fifth (20%) rate being quite satisfied with a further 14% state they are very satisfied. Further supporting the existing availability of provision is the smaller percentage of respondents that are either quite dissatisfied (4%) or very dissatisfied (1%).

Allotment associations are responsible for the day to day management of the sites. Many of the sites operate a waiting list due to the popularity and demand for plots.

To determine whether sites are high or low quality (as recommended by the Companion Guidance) site assessments scores are colour-coded against a baseline threshold (high being green and low being red). The table below summarises the results of the quality assessment for allotments. A threshold of 50% is applied in order to identify high and low quality. Further explanation of how the quality scores and threshold are derived can be found in Part 2 (Methodology).

Quality ratings for allotments

Analysis area	Scores (%)			Spread	No. of sites	
	Lowest score	Average score	Highest score		Low <50%	High ≥50%
Chesterfield	36%	58%	73%	37%	1	32

Only one site rates below the quality threshold. Swaddale Allotments appears to not be in use. The site was overgrown and not accessible at the time of the visit. This site has now been earmarked for housing in the local plan.

Overall, quality of provision is very good with nearly all identified sites rating above the threshold for quality. The highest scoring sites are:

- Mastin Moor Community Garden (73.3%)
- Ashfield Road Allotments (68.9%)
- Goldwell No 2 Allotments (67.8%)
- Goldwell No 1 Allotments (65.6%)
- Old Road Allotments (65.6%)

All five sites have good personal security, signage and excellent boundary fencing. Mastin Moor Community Garden has the additional benefit of seating and bins. Furthermore, all the sites are observed as being well maintained containing neat plots and good pathways.

It is also important to recognise the Rufford Close Allotment site is a previous East Midlands In Bloom competition winner. The site was recognised for its organisation and tidiness.

Most respondents to the community survey (49%) had no opinion to the quality of allotments. Of those that did, 20% rate quality as quite satisfactory with a further 11% rating it as very satisfactory. There is a small proportion of respondents that are either quite dissatisfied (2%) or very dissatisfied (2%) with quality of allotments.

To determine whether sites are high or low value (as recommended by the Companion Guidance) site assessment scores are colour-coded against a baseline threshold (high being green and low being red). The table below

summarises the results of the value assessment for allotments. A threshold of 20% is applied in order to identify high and low value.

Value ratings for allotments

Analysis area	Scores (%)			Spread	No. of sites	
	Lowest score	Average score	Highest score		Low <20%	High ≥20%
	Chesterfield	9%	29%		56%	47%

Nearly all assessed allotment sites rate above the threshold for value. This is a reflection of the associated social inclusion and health benefits, amenity value and the sense of place offered by such forms of provision. Swaddale Allotments is the only site to rate below the value threshold. The site appears to not be in use as it was overgrown and not accessible at the time of the visit.

The highest scoring sites for value are Mastin Moor Community Garden (56%) and Hunloke Community Garden (49%). Both are very well maintained. Unusually both sites can be accessed by the public; as opposed to only being used by allotment holders. This further adds to their role and benefit to the local communities.

Other sites also offer additional social value. For example, Goldwell No. 2 Allotments is highlighted as having two raised beds and a sensory garden for disabled users. In addition, a plot on the site is used by the Oak Springs charity as part of a rehabilitation programme.

Avenue Road Allotments is also identified as having a plot that been converted to a communal plot for growing space; enhancing the sites social and community value.

There is high ecological and biodiversity value at Goldwell No. 2 Allotments. The site is teeming with wildlife and attracts a lot of wildlife including dragonflies, newts, bees, and bats. There is a pond on site too, some rare weeds and wildlife encouragement is an ongoing project. In the future, the association would like to have schools visiting and to be shown the pond as this concept would be very beneficial.

The value of allotments is further demonstrated by the existence of waiting lists at sites signalling continued demand for provision.

Cemeteries and closed church yards

Cemeteries and churchyards include areas for quiet contemplation and burial of the dead. Sites can often be linked to the promotion of wildlife conservation and biodiversity.

There are 10 sites classified as cemeteries/churchyards, equating to nearly 30 hectares of provision. No site size threshold has been applied and as such all identified provision is included within the audit.

Distribution of cemeteries and churchyards

Analysis area	Cemeteries/churchyards	
	Number of sites	Size (ha)
Chesterfield	10	29.50

The largest contributor to burial provision in the area is Chesterfield and District Crematorium (6.35 hectares). This followed by Boythorpe Cemetery at 5.37 hectares.

There are four sites operated by CBC:

- Brimington Cemetery
- Boythorpe Cemetery
- Spital Cemetery
- Staveley Cemetery

Several closed churchyards are also maintained by the Council.

The Chesterfield and District Crematorium is managed by a Joint Crematorium Committee as it is jointly owned by Chesterfield Borough Council and Bolsover and North East Derbyshire Councils.

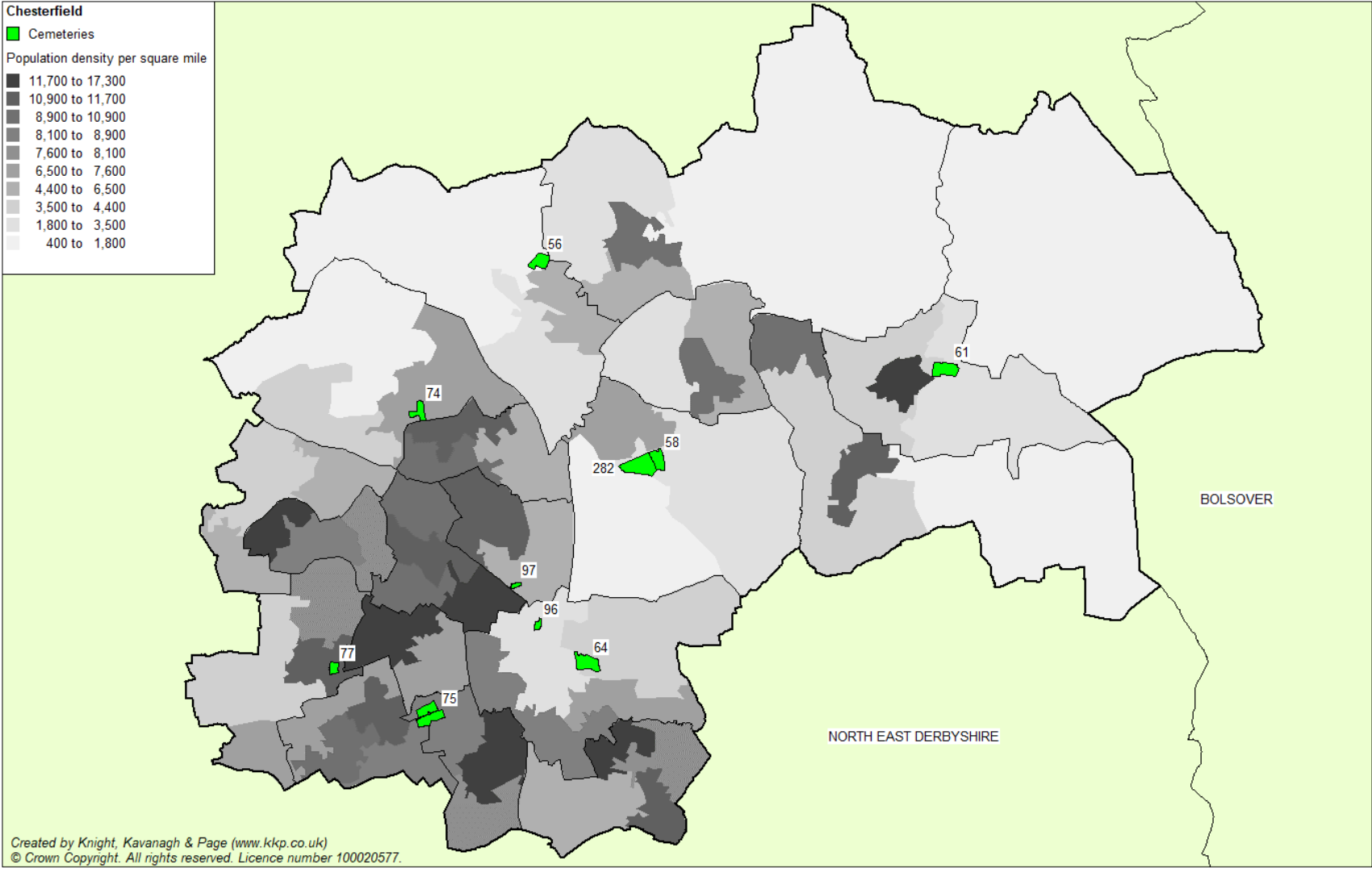
Respondents to the community survey were asked how satisfied they are with how much open space exists in the area. No issue with regard to the quantity of cemeteries is highlighted. A quarter of respondents (25%) rate being quite satisfied with a further 13% stating they are very satisfied. Further supporting

the existing amount of provision is the smaller percentage of respondents that are either quite dissatisfied (2%) or very dissatisfied (1%). There are 39% of respondents who have no opinion to provision of cemeteries.

No accessibility standard is set for this typology and there is no realistic requirement to set such standards. Provision should be based on burial demand.

The map below shows cemeteries and churchyards mapped against analysis areas.

Cemetery sites mapped



Key to sites mapped

Site ID	Site name	Quality Score	Value Score
56	St Bartholomew's Church Old Whittington Closed Churchyards	59.6%	47.8%
58	Brimington Cemetery	66.1%	70.0%
61	Staveley Cemetery	68.5%	76.7%
64	Spital Cemetery	65.4%	63.3%
74	St John's Newbold	55.5%	32.2%
75	Boythorpe Cemetery	70.6%	77.8%
77	St Thomas' Church Brampton	76.6%	62.2%
96	St Mary and All Saints Church	64.0%	43.3%
282	Chesterfield and District Crematorium	86.6%	81.1%
97	Holy Trinity Church	62.6%	47.8%

In terms of provision, mapping demonstrates a fairly balanced distribution across the area. As noted earlier, the need for additional cemetery provision should be driven by the requirement for burial demand and capacity.

Respondents to the community survey were asked how satisfied they are with how close open space in the area is. No issue with regard to 'closeness' of cemeteries is highlighted. A fifth of respondents (25%) state being quite satisfied with a further 16% being very satisfied with how close cemeteries provision is. Further supporting the existing amount of provision is the smaller percentage of respondents that are quite dissatisfied (1%) or very dissatisfied (1%).

To determine whether sites are high or low quality (as recommended by the Companion Guidance) site assessments scores are colour-coded against a baseline threshold (high being green and low being red). The table below summarises the results of the quality assessment for cemeteries. A threshold of 60% is applied in order to identify high and low quality. Further explanation of how the quality scores and threshold are derived can be found in Part 2 (Methodology).

Quality ratings for cemeteries

Analysis area	Scores (%)			Spread	No. of sites	
	Lowest score	Average score	Highest score		Low <60%	High ≥60%
Chesterfield	56%	68%	87%	31%	2	8

The majority of cemeteries and churchyards in Chesterfield (80%) rate above the threshold set for quality; suggesting a reasonably high standard of quality.

Chesterfield and District Crematorium, in Brimington, is the highest scoring site for quality with a score of 87%. It scores significantly higher than the other sites. It is observed as being well-maintained with accessible paths and ancillary features such as seating, car parking (Including disabled parking bays) and toilet facilities. It also has excellent signage, directional signposts, and a map of the large site. Furthermore, it has a child burial area, garden of remembrance as well as a woodland walk; all add to the quality of the site as well as the aesthetic value and health benefits. Its high quality is represented by it being a Green Flag Award site.

Boythorpe Cemetery (71%) also scores well above the threshold for quality. The site is observed as containing excellent, flat, wide paths, being tidy and containing lots of seating. It also seems very well used by locals as a cut through and for plot holders accessing the allotments adjacent to the cemetery.

The only two sites to rate below the quality threshold are:

- St Bartholomew's Church Old Whittington Closed Churchyards (59.6%)
- St John's Newbold (56%)

It should be noted that St Bartholomew's Church Old Whittington Closed Churchyards scores just below the threshold of 60%. There are no major issues highlighted but the site scores lower for paths and general maintenance. It is observed that paths are mostly fine but are uneven in parts. In addition, there are several tilted gravestones. However, the site does have seating, some car parking and litter bins.

St John's Newbold is observed as being well maintained overall. It only just scores below the threshold (56%). The site, in comparison to others, has no car parking or seating but it does benefit from good pathways and bins.

Most respondents (40%) have no opinion on this. The rest of the respondents to the community survey are generally satisfied with the quality of provision. Over a fifth of respondents' rate quality as quite satisfactory (26%) with a further 11% rating provision as very satisfactory. There is a small proportion of respondents that are either quite dissatisfied (3%) or very dissatisfied (2%) with quality of cemeteries.

To determine whether sites are high or low value (as recommended by the Companion Guidance) site assessment scores are colour-coded against a baseline threshold (high being green and low being red). The table below summarises the results of the value assessment for cemeteries. A threshold of 20% is applied in order to identify high and low value.

Value ratings for cemeteries

Analysis area	Scores (%)			Spread	No. of sites	
	Lowest score	Average score	Highest score		Low <20%	High ≥20%
Chesterfield	32%	60%	81%	49%	0	10

All identified cemeteries and churchyards are assessed as being of high value, reflecting their role within local communities. In addition, the cultural/heritage value of sites and the sense of place they provide for local people is acknowledged in the assessment scoring. High scoring sites for value offer visually attractive landscape benefits and opportunities to serve an important function for a local community. As well as providing burial space, cemeteries and churchyards can often offer important low impact recreational benefits to the local area (e.g. walking, habitat provision, wildlife watching).

Chesterfield and District Crematorium (81%) scores the highest for value. It is a well-used Green Flag Award site. In addition to its 'traditional' function the site also has added ecological and biodiversity value with lots of trees, blossoms, a pond, and woodland walk.

Similarly, the other four main cemetery sites all rate highly for value. This reflects their role and use to the local communities they serve.

Green Corridors

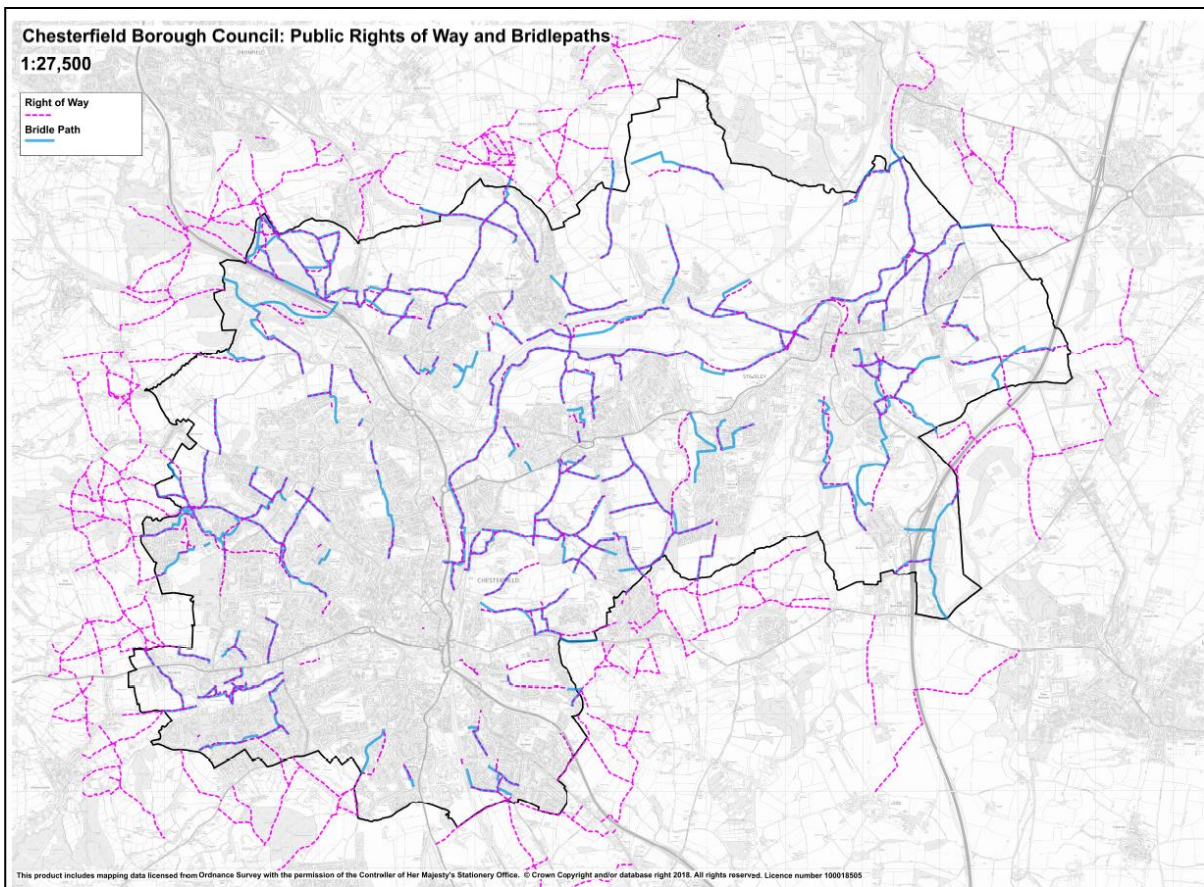
The green corridors typology includes sites that offer opportunities for walking, cycling or horse riding, whether for leisure purposes or travel and opportunities for wildlife migration.

There are four forms of green corridor provision identified across Chesterfield.

- Chesterfield Canal
- Holme Brook Valley Trail
- Hipper Valley Trail
- Trans Pennine Trail and Cuckoo Way

It is acknowledged that there are other forms of provision in Chesterfield which are likely to contribute to green corridors such as public rights of way (PROW). However, the focus of this study is on those main forms of provision.

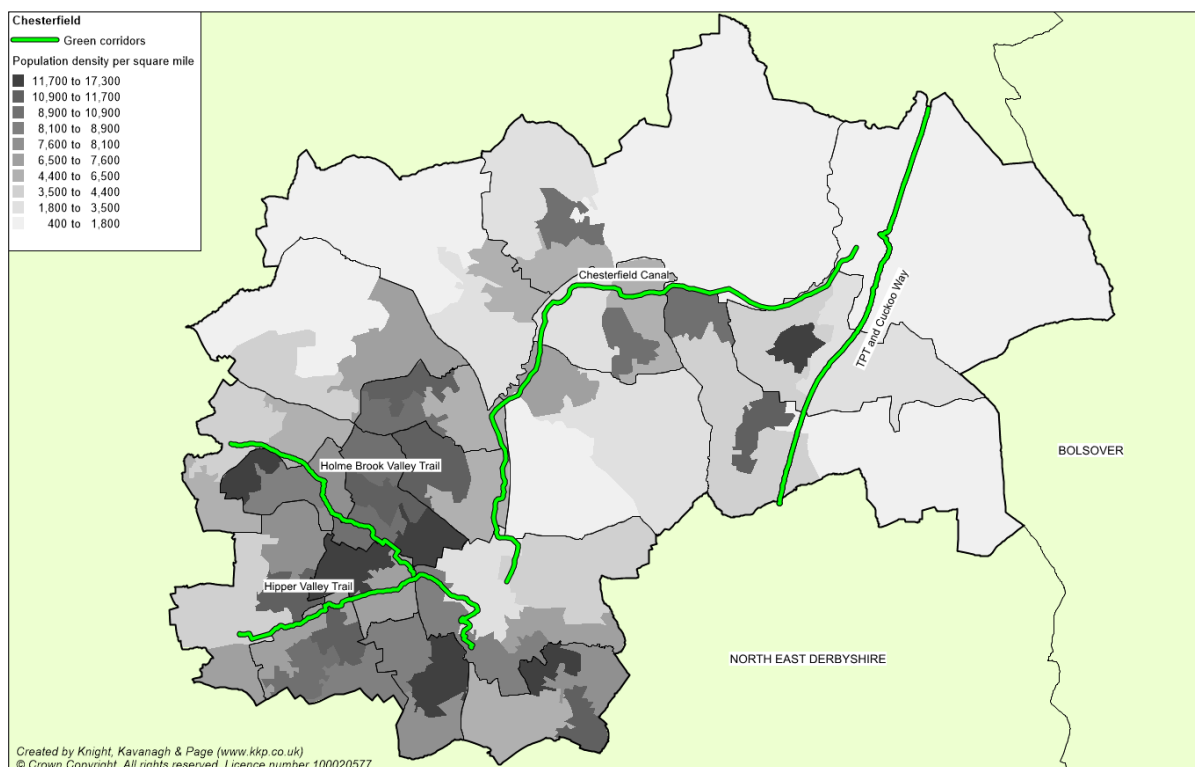
Public rights of way and bridle paths in Chesterfield



Respondents to the community survey were asked how satisfied they are with how much open space exists in the area. No issue with regard to availability of outdoor networks is highlighted. Nearly half of respondents (43%) rate being quite satisfied with the how much provision exists. A further 20% state they are very satisfied. Further supporting the existing amount of provision is the smaller percentage of respondents that are either quite dissatisfied (10%) or very dissatisfied (5%).

It is difficult to assess green corridors against catchment areas due to their linear nature and usage. The map below shows green corridors mapped in the area.

Green corridors mapped



Key to sites mapped

Site ID	Site name	Quality score	Value Score
327	Chesterfield Canal	84.2%	83.3%
329	Holme Brook Valley Trail	61.4%	31.1%
330	Hipper Valley Trail	64.9%	31.1%
331	Trans Pennine Trail and Cuckoo Way	74.9%	48.9%

Respondents to the community survey were asked how satisfied they are with how close open space in the area is. No issue with regard to 'closeness' of green corridors is highlighted. Two fifths (41%) rate being quite satisfied with the how close green corridors provision is. A further 27% state they are very satisfied. Further supporting the existing amount of provision is the smaller percentage of respondents that are quite dissatisfied (7%) or very dissatisfied (4%).

To determine whether sites are high or low quality (as recommended by the Companion Guidance) site assessments scores are colour-coded against a baseline threshold (high being green and low being red). A threshold of 60% is applied in order to identify high and low quality.

Quality ratings for green corridors

Analysis area	Scores (%)			Spread	No. of sites	
	Lowest score	Average score	Highest score		Low	High
					<60%	≥60%
Chesterfield	61%	71%	84%	23%	0	4

All four green corridors rate above the threshold for quality. No particular issues are identified. Observations do note that the main sign for the Hipper Valley Trail (in Somersall Park) could do with being refreshed.

Chesterfield canal rates above the threshold for quality. It scores highly for accessibility, signage/information as well as being generally well kept and maintained. Its high quality is represented by it being a Green Flag Award winner (2019/20).

Most respondents to the community survey are generally satisfied with the quality of outdoor networks provision. Over two fifths of respondents' rate quality as quite satisfactory (43%) with a further 17% rating provision as very satisfactory. There is a small proportion of respondents that are quite dissatisfied (9%) or very dissatisfied (5%) with quality.

To determine whether sites are high or low value (as recommended by the Companion Guidance) site assessment scores are colour-coded against a baseline threshold (high being green and low being red). A threshold of 20% is applied in order to identify high and low value.

Value ratings for green corridors

Analysis area	Scores (%)			Spread	No. of sites	
	Lowest score	Average score	Highest score		Low	High
					<20%	≥20%
Chesterfield	31%	49%	83%	-	0	4

All four green corridors rate above the threshold for value. It is important to highlight that the green corridors serve as an important link between different open space sites. A summary of the connections each green corridor provides is set out below:

Connecting open space sites to green corridors

Green corridor	Other connecting open space sites
Chesterfield Canal	Staveley Town Basin, BRSA Sports Ground, Bluebank Wood
Holme Brook Valley Trail	Holme Brook Valley Country Park, Loundsley Green Park, Purbeck Avenue/Pennine Way, Chester Street Recreation Ground, Goldwell Allotments, Queens Park
Hipper Valley Trail	Somersall Park/Walton Park, Walton Dam, Queens Park, Spire Walk,
Trans Pennine Trail and Cuckoo Way	Pullman Close Plantation, Poolsbrook Country Park, Haddon Close Amenity

Chesterfield canal rates highest for value. It provides many recreational and learning opportunities. The Tapton Lock visitors centre offers additional educational and social benefits. Further adding to its value are the range of events which take place throughout the year.

